



THERMOSPAN® 150

INSULATED SECTIONAL
STEEL DOORS CUT
YOUR TOTAL COST



WAYNE DALTON COMMERCIAL DOORS

Thermospan® 150

Wayne Dalton's Thermospan® 150 polyurethane insulated door features excellent thermal efficiency as well as strength, rigidity and durability.

The Wayne Dalton Thermospan® Series doors are the only doors in the industry with patented, roll-formed integral struts on each section, making them the most rigid doors available.

- EXCELLENT THERMAL QUALITIES
(R-VALUE* = 14.16, U-VALUE = 0.07)
- STANDARD SIZES UP TO 26' 2" WIDE
AND 20' 1" HIGH
- COMMERCIAL/INDUSTRIAL DURABILITY
- INTEGRAL STEEL STRUTS FOR SUPERIOR
STRENGTH



INSULATED SECTIONAL STEEL DOOR

Standard Features Overview

Thermal Efficiency

R-value*	14.16 (2.49 K m ² /W)
U-value	0.07 (.397 W/K m ²)
Thermal Break	Thermoplastic adhesive with rubber seal
Air Filtration	.23 cfm/ft ² at 15mph (4.20 m ³ /hr/m ² at 24 kmph)

Construction

Section Thickness	1-3/8" (35 mm)
Integral Struts	Two 1-3/4" roll-formed struts per section
Max Standard Height	20'1" (6126 mm)
Max Standard Width	26'2" (7986 mm)
Exterior Steel	.009 (.228mm)
Interior Per Section	Roll formed with two 1-3/4" integral struts sealed with polypropylene rib caps
Standard Springs	10,000 cycle

Warranty

TEN (10) YEARS against cracking, splitting, rust deterioration and delamination.
ONE (1) YEAR against defects in material and workmanship

Color Options

Interior Color	White
Exterior Color	White, Tan, Brown, Gray Optional: Kynar White, Kynar Brown, Kynar Beige

Codes and ASTM Standard Class

STC (ASTM E 413)	Class 22
OITC (ASTM E 1332)	Class 19
ASTM E 84	Class A
UBC 17-5	Meets
ASTM D 1929	Flash ignition = 734° F, Self ignition = 950° F

Options

- Pass Door
- Vision Lites
- Aluminum Full View Sections
- Chain Hoist Operation
- Motor Operation
- Sensing Edges
- Photo Eyes
- High Cycle Spring (25K, 50K, 100K)
- 3" Track Option
- Solid Shafts
- Perimeter Weatherseal
- Special Track Designs
- Mullions

Thermospan® 150 offers a robust combination of characteristics, including strength, rigidity, longer life and energy efficiency at a highly competitive price.

- **Strength and Rigidity** – Features two patented 1³/₄" integral roll-formed struts per section providing the highest strength-to-weight ratio.
- **Virtually Maintenance Free** – The surface of hot-dipped galvanized, structural quality steel that is factory finished with pre-painted primer and baked-on finish.
- **Thermal Efficiency** – Innovative thermal break that keeps the interior skin at room temperature, preventing condensation and frost and thereby resisting corrosion. Flexible vinyl bulb seal and non-corrosive polymer retainer prevent water and air infiltration at the bottom of the door.
- **Long Lasting** – Reinforcement plates are located at all hardware attachment locations, and industry standard commercial-grade, heavy-duty, hot-dipped galvanized hardware also contribute to the long service life of the Thermospan® 150.

Color Options

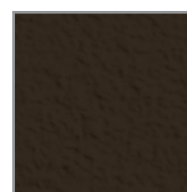
White
Embossed
Stucco Finish



Tan
Embossed
Stucco Finish



Brown
Embossed
Stucco Finish



Gray
Embossed
Stucco Finish



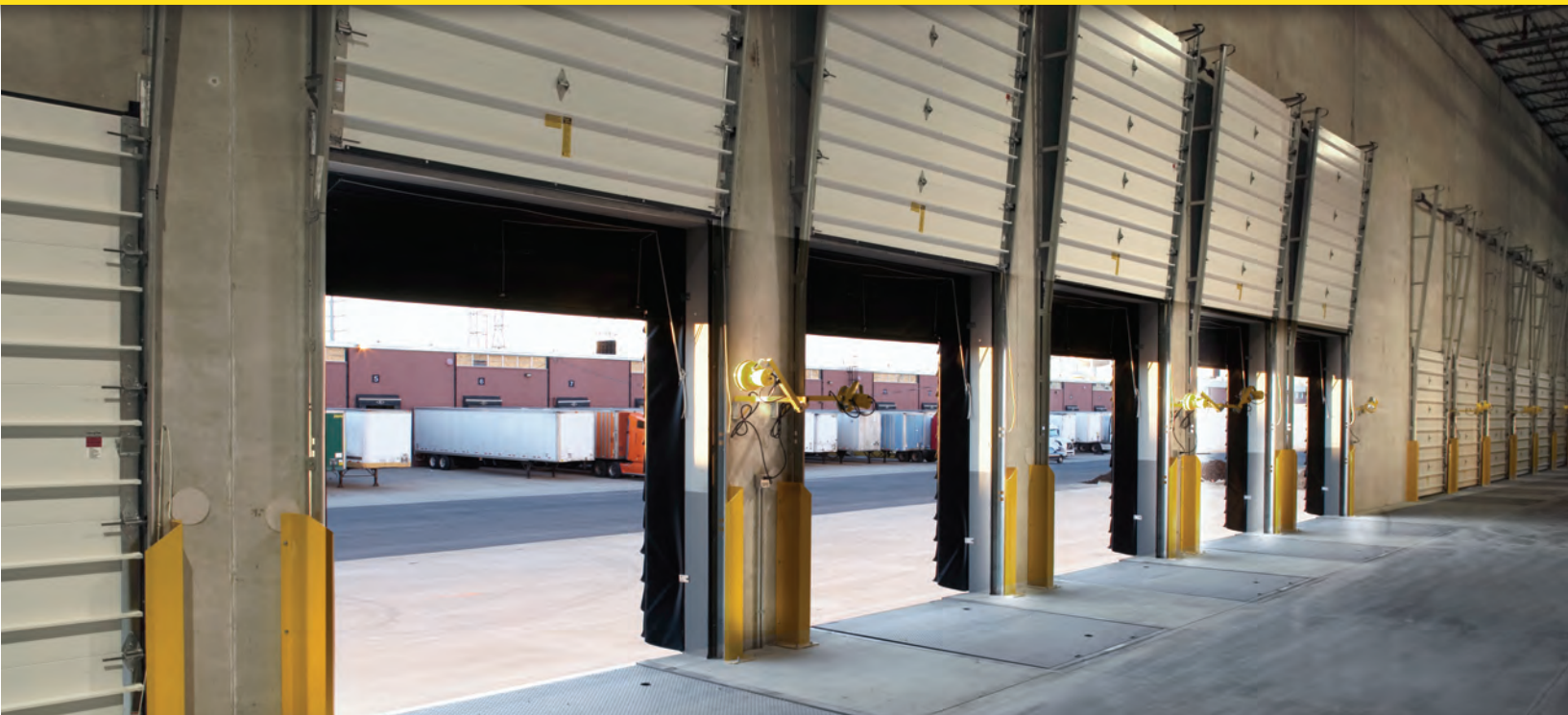
Optional Colors:
Kynar White, Kynar
Brown, Kynar Beige

*Wayne Dalton uses a calculated door section R-value for our insulated doors.



Wind load options available

THERMOSPAN[®] 150



Lite Options



Vision lites allow for visibility while maintaining security.



Aluminum full view sections allow for maximum natural light and visibility.

Flush door embossed pinstriping (grooves) on outer skin adds strength and non-repeating random stucco exterior enhances appearance.

Thermal break separates inner and outer skins at top and bottom so virtually no heat or cold is conducted through the section.

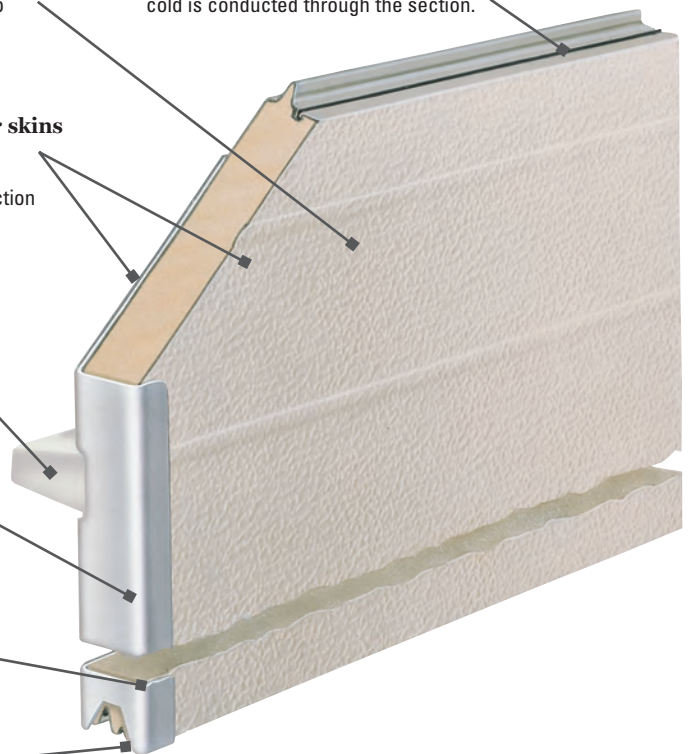
Prepainted inner and outer skins for added corrosion-resistance. Both skins are hot-dipped galvanized steel for further protection against corrosion.

Integral struts
Two 1 3/4" roll-formed struts per section add rigidity and strength.

18-gauge wrap-around end caps offer interior hinge attachment surface and exterior leg for proper seal against jamb.

Solid polyurethane core adds to insulating efficiency.

Joint seal prevents air infiltration and improves thermal efficiency.



General Operating Clearances

Type	Headroom***		Sideroom**		Depth into Room	Center Line of Springs	
	2" Track	3" Track	2" Track	3" Track	2" & 3" Track	2" Track	3" Track
Standard Lift Manual 12" R	13"-17"	NA	4.5"	5.5"	Opening Height +18"	Opening Height +12"	N/A
Standard Lift Manual 15" R	15"-20"	16"-21"				Opening Height +13"	Opening Height +14"
Standard Lift Motor Oper. 12" R	15"-20"	NA			Opening Height +66"	Opening Height +12"	N/A
Standard Lift Motor Oper. 15" R	15"-20"	18"-24"				Opening Height +13"	Opening Height +14"
High Lift Manual	High Lift +12"		24" One Side		Opening Height -Lift +30"	Opening Height +Lift +6.5"	Opening Height +Lift +7.5"
High Lift Motor Oper.							
Vertical Lift Manual	Door Height +20"		4.5"	5.5"	18"	Double Door Height +13"	
Vertical Lift Motor Oper.			24" One Side				
Low Headroom Manual*	6"-15"	6"-15"	6"	9"	Opening Height +20" to-26"	N/A	
Low Headroom Motor Oper.*	9"-17"	9"-17"			Opening Height +66"		

*For low headroom, springs must be rear mount to achieve minimum headroom listed. Front mount torsion headroom depends on drum size, and varies over the range listed. See approval drawing.

**Side-room of 8" required, one side, for doors with chain hoist.

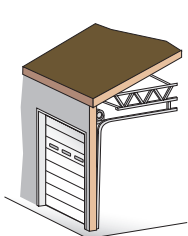
***Headroom depends on drum size, and varies over the range listed. See approval drawing.

Panel/Section Selection Guide

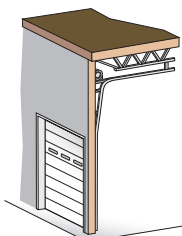
Door Section and Lite Selection			Door Height and Section Selection	
Door Width	Number of Panels	Maximum Number of Windows	Door Height	Number of Sections
Up to 9'2"	2	2 or 3	Up to 8'1"	4
9'3" to 12'2"	3	3 or 4	8'-8" to 10'1"	5
12'3" to 16'2"	4	4 or 5	10'5" to 12'1"	6
16'3" to 19'2"	5	6	12'2" to 14'1"	7
19'3" to 24'2"	6	7	14'2" to 16'1"	8
24'3" to 26'2"	7	7	16'2"-18'1"	9
			18'2" to 20'1"	10
			20'2" and Up	Call Factory

For assistance from the factory, please call 800-827-3667.

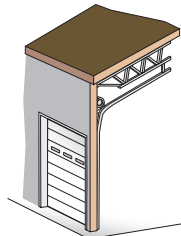
Track Selection Guide



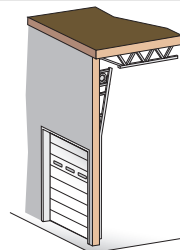
Standard Lift



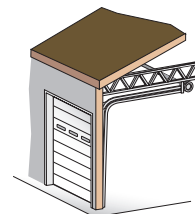
High Lift
(break-away is standard, straight incline is available)



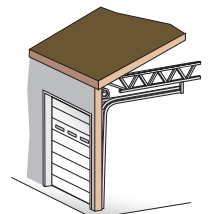
Roof Pitch
(standard or high lift)



Vertical Lift
(break-away is standard, straight incline is available)



Low Headroom
(rear mount torsion)



Low Headroom
(front mount torsion)

FOR TECHNICAL INFORMATION, VISIT WWW.WAYNE-DALTON.COM/COMMERCIAL

Architect Resource Center

www.wayne-dalton.com/commercial

Go to www.wayne-dalton.com/commercial and click on the Architect Resource Center. Here you will quickly find all of the specifications, drawings and documents you need to complete your project.

DISTRIBUTED BY:



Beaton Industrial, Inc. | 800-724-4052 | Support@BeatonIndustrial.com

©2015 Wayne Dalton, a division of Overhead Door Corporation. Consistent with our policy of continuing product improvement, we reserve the right to change product specifications without notice or obligation. Item 332535 2M 1/15 JAR