

# Duff-Norton

## INSTALLATION AND MAINTENANCE INSTRUCTIONS

## COFFING® CT SERIES TROLLEYS (1/4- to 3-Ton)

PUBLICATION PART NO. CT-698-A

### SECTION I INSTALLATION

#### 1-1. General Information

The Coffing CT Series trolleys are designed for use with most hook mounted hoists with load ratings up to 3 tons. They can be mounted on American Standard I Beams from 6 to 18 inches high. Adjustment for different beam dimensions is accomplished with the proper placement of spacer washers as described in paragraph 1-2.

#### 1-2. "I" Beam Adjustment

The flange width of the beam on which the trolley is to be mounted should be measured and the trolley adjusted by moving spacer washers to achieve a beam to wheel spacing of approximately  $\frac{3}{32}$ " (point C of Figure 1). The same number of washers should be used on each side of the hanger bar.

#### 1-3. Curved Beam Radius Adjustment

CT Series trolleys can be mounted on curved beams with radii as small as five feet. Slightly increased spacing may be required to maintain freedom of movement. The radius will determine the amount of additional spacing.

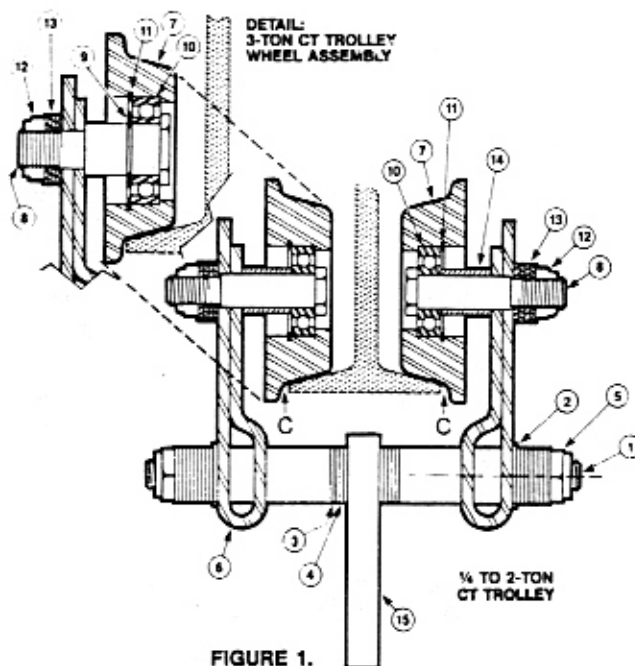
### SECTION II MAINTENANCE

#### 2-1. Periodic Inspection

The trolley should be inspected periodically for evidence of excess wear or overload. Parts should be replaced as required.

#### 2-2. Lubrication

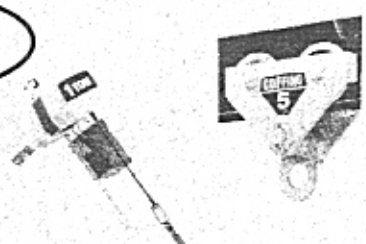
Trolley wheels are equipped with sealed, lifetime lubricated, precision ball bearings which should not require relubrication for the normal service of the trolley.



### CHART 1. PARTS LIST

SYMBOL NO.	PART NAME	PART NUMBERS	
		1/4- to 2-Ton	3-Ton
1	Load Pin	103K1	103K1
2	Washer (1/8" Thick)	H-4211	H-4211
3	Washer (.135" Thick)	H-4209	H-4209
4	Washer (.075" Thick)	H-4210	H-4210
5	Nut	H-3945	H-3945
6	Side Plate	5K1	5K2
7	Wheel	45K1	45K2
8	Axle	102K1	102K2
9	Retaining Ring	Not Required	H-5530
10	Bearing	500K4	500K5
11	Retaining Ring	H-5528	H-5529
12	Nut (Axle)	H-3945	H-3946
13	Washer	H-4211	H-4212
14	Spacer	200K1	Not Required
15	Clevis	50K1	50K1

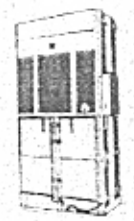
**BEATON**



**OVERHEAD EQUIPMENT HOISTS**



**ERGONOMICS**



**HYDRAULIC BALERS**

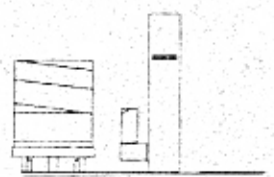
AIR CURTAINS  
 BALERS/COMPACTORS  
 BELOW HOOK  
 BENCHES/CARTS/TOOLS  
 BRIDGE CRANES  
 CABINETS  
 CASTERS/WHEELS  
 CONTAINERS/WHEELS  
 CONVEYORS  
 DOCK EQUIPMENT  
 ENGINEERED SYSTEMS  
 FLOOR MATTING  
 OVERHEAD DOORS  
 DRUM HANDLING  
 FLAMMABLE CABINETS  
 FLOW RACK  
 GANTRY CRANES  
 GUARD RAIL  
 HAND TRUCKS  
 HIGH SPEED ROLL UP DOORS  
 HOISTS  
 INDUSTRIAL BATTERIES  
 INDUSTRIAL VACUUMS  
 INPLANT OFFICES  
 INSTALLATIONS  
 JIB CRANES  
 LAYOUTS/DESIGNS  
 LIFTERS  
 LIFT TABLES  
 LOCKERS  
 MACHINE MOVERS  
 MESSAGE TRANSFER  
 MEZZANINES  
 MODULAR DRAWER CABINETS  
 MOBILE AISLE STORAGE  
 OFFICE FURNITURE  
 OVERHEAD LIFTING EQUIPMENT  
 PALLETS  
 PALLET TRUCKS  
 PERSONNEL LIFTS  
 SAFETY LADDERS  
 SCALES  
 SELF DUMPING HOPPERS  
 SERVICE/SERVICE CONTRACTS  
 STACKER CRANES  
 STORAGE PRODUCTS  
 STRETCH WRAP MACHINES  
 SHIPPING SUPPLIES  
 TABLES  
 TOILET PARTITIONS  
 AND MANY MORE...



**CONVEYOR**



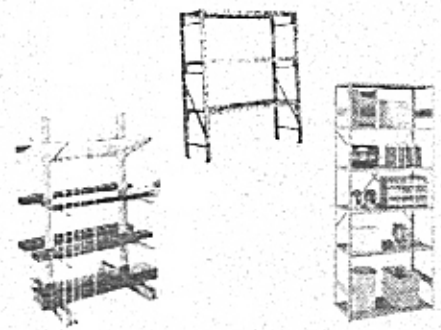
**BRIDGE CRANES**



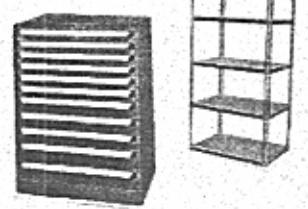
**WRAPPERS**



**SLINGS**



**RACKING/SHELVES**



**SHOP EQUIPMENT**



**HAND TRUCKS**

**Beaton Industrial, Inc.**

6083 Trenton Road  
Utica, NY 13502

Ph. 1-800-724-4052 (N.Y. Only)

Ph. 1-315-797-9346

Fax 1-315-797-9321

e-mail:

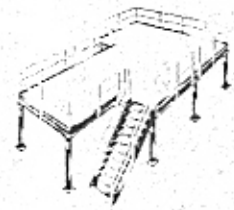
beaton@deamscape.com

Web:

www.BeatonIndustrial.com



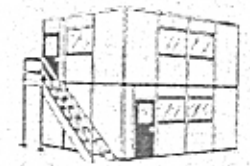
**PULLERS**



**MEZZANINES**



**DOCKS, DOORS, SEALS**



**INPLANT OFFICES**

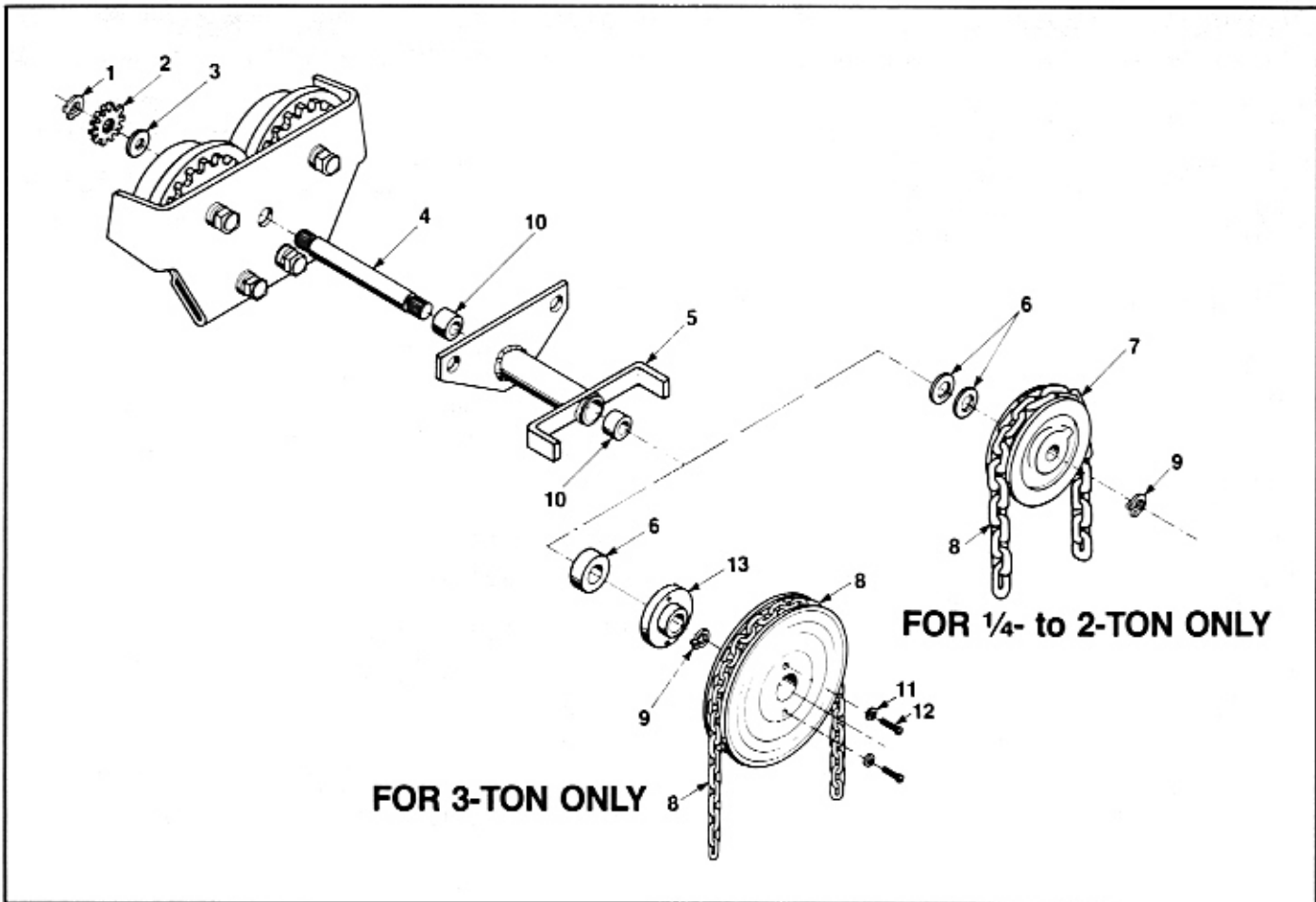
**HOIST AND CRANE REPAIR CENTER  
 INSTALLATIONS, PARTS, SERVICE  
 DESIGN/LAYOUT/ FABRICATIONS,  
 APPLICATION STUDIES  
 CRANE & HOIST INSPECTIONS**



**CASTERS**

*"Specializing In Materials Handling"*

## CT SERIES TROLLEYS (GEARED) (1/4-3 Ton)



Index No.	Part Name	Part No.	Index No.	Part Name	Part No.
1	Retaining Ring	H-5501	7	Hand Chain Wheel:	
2	Pinion	420K1		2-Ton	33K2
3	Spacer Bearing (1/16 Thick)	525K2		3-Ton	33K13
4	Gear Shaft	100K14-2	8	Hand Chain (Specify length)	53A
5	Sleeve and Adapter Assembly:		9	Retaining Ring	H-5527
	2-Ton	51KG1-3	10	Sleeve Bushing	530K6
	3-Ton	51KG2-3	11	Washer	H-4138
6	Spacer Bearing	525K1	12	Bolt	H-2304
			13	Hub Adapter	51K4

**Duff-Norton**

P.O. Box 7010  
Charlotte, NC 28241-7010

Customer Service (704) 588-2720  
Parts Service (704) 588-2323  
FAX (704) 588-8466

Duff-Norton Manufactures:

Duff-Norton® Actuators • Mechanical Jacks • Rotary Unions® • Coffing® Hoists  
Duff Lynx® Hoists • Yale® Hoists • Shop King Hoists • Little Mule® Products • American Lifts