

Duff-Norton®

INSTALLATION INSTRUCTIONS

PUBLICATION PART NO. BC-680

COFFING® BRIDGE CRANE KIT MODEL BCD-4000

SECTION I APPLICATION AND USE

1-1. Industrial Use Only

The model BCD-4000 Crane Kit can be used to construct bridge cranes with up to 4000 pounds rated load. The kit is intended for industrial use only and should not be used to lift, support, or otherwise transport people.

1-2. Crane Truck Design

The BCD-4000 crane truck is designed to fit a 6 inch American Standard I-beam (3.33 inch flange width). With the use of spacer shims between the two sides of the crane truck, it may be adjusted to fit up to a 12 inch American Standard beam (5.00 inch flange width). When ordered to fit a 6, 8, 10, or 12 inch I-beam, the crane kit includes a sufficient quantity of shims to fit the beam for which it was ordered.

The standard BCD-4000 crane truck uses tapered tread wheels to fit American Standard I-beams. Trucks with flat tread wheels for Wide Flange or Patented Track are available on special order.

1-3. Span Beam Sizing

The size of I-beam required to provide adequate strength in the span beam depends on the rated load and the length of the span. Refer to Table 1 for the minimum beam size that should be used for various combinations of span and load rating.

SECTION II INSTALLATION

2-1. Preparation

a. The first step of installing the bridge is to be sure that the runway beams are parallel. Runways should be parallel within 1/4 inch maximum. Setting the trucks with extra clearance between the beam flange and guide rollers to

accommodate non-parallel beams will result in bridge skewing and binding.

b. I-beam dimensions can vary considerably from nominal handbook specifications. The flange width of the runway beams should be measured and the crane trucks adjusted with the provided shims so that the distance between the guide rollers is 1/4 inch more than the flange width. The shims, which are each 1/16 inch thick, should be placed between the truck halves, and the through-bolts run up snug to check the setting.

2-2. Truck Positioning

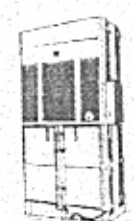
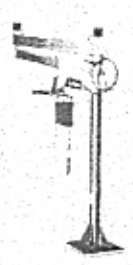
- Place the adjusted trucks on the runway beams. If the ends of the beams are accessible, the truck may be slipped over the end of the beam without disassembly. With the truck on the beam, loosen the through-bolts to let the two truck halves position themselves so that all four wheels are contacting the beam. Tighten through-bolts to 45 ft.-lbs. torque.
- Position the trucks directly opposite one another on their runways. Be sure each truck is centered on its beam, not riding to one side. Carefully measure the distance between the eight holes for attaching the span beam to the crane trucks. Drill the top flange of the span beam to accept the 1/2 inch Grade 5 beam mounting bolts.
- The span beam should be at least as long as the outside to outside distance between the two trucks, and should be equipped with stops to prevent the hoist and trolley from traveling beyond the center of either runway beam.
- Fasten the span beam to the trucks using the mounting hardware provided (see Figure 1). Double check that the span beam is perpendicular to the runway beams and that the trucks are centered on the runway beams. Tighten beam mounting bolts to 75 ft.-lbs. torque.

TABLE 1 - SPAN BEAM SIZING

Rated Load* (lbs)	10 ft. Span	12.5 ft. Span	15 ft. Span	17.5 ft. Span	20 ft. Span	22.5 ft. Span	25 ft. Span	27.5 ft. Span	30 ft. Span
	Beam Size**	Beam Size	Beam Size	Beam Size	Beam Size	Beam Size	Beam Size	Beam Size	Beam Size
500	6"x12.5#	6"x12.5#	6"x12.5#	6"x12.5#	6"x12.5#	6"x12.5#	7"x15.3#	7"x15.3#	7"x20#
1000	6"x12.5#	7"x15.3#	7"x15.3#	7"x15.3#	7"x20#	8"x18.4#	8"x23#	10"x25.4#	10"x25.4#
2000	7"x15.3#	8"x18.4#	8"x23#	10"x25.4#	10"x25.4#	10"x35#	12"x31.8#	12"x31.8#	12"x35#
3000	8"x23#	10"x25.4#	10"x35#	12"x31.8#	12"x35#	15"x42.9#	15"x42.9#	15"x42.9#	15"x42.9#
4000	10"x25.4#	10"x35#	12"x31.8#	15"x42.9#	15"x42.9#	15"x42.9#	15"x42.9#	-	-

* Chain hoist and trolley included in capacity. Loads are based on ASTM-A36 steel beams or equal.
 ** Beam weights are per foot of beam. Multiply weight figure shown by length (in feet) of span beam used, in computing total installed weight.
 CAUTION: Be sure parallel tracks are sufficiently strong to withstand the capacities you intend to carry — including the weight of the span beam, bridge unit, hoist, trolley and other accessories. Use a minimum safety factor of 5:1. If in doubt, consult a qualified Structural Engineer.

BEATON



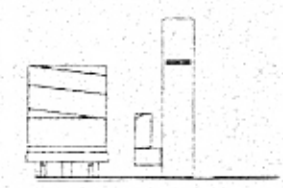
OVERHEAD EQUIPMENT HOISTS

ERGONOMICS

HYDRAULIC BALERS



BRIDGE CRANES

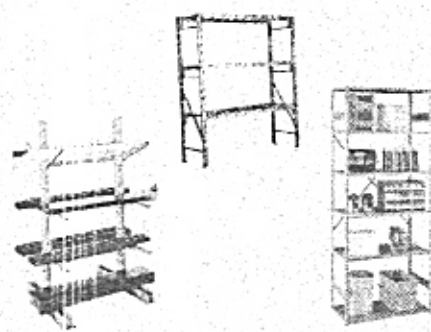


- AIR CURTAINS
- BALERS/COMPACTORS
- BELOW HOOK
- BENCHES/CARTS/TOOLS
- BRIDGE CRANES
- CABINETS
- CASTERS/WHEELS
- CONTAINERS/WHEELS
- CONVEYORS
- DOCK EQUIPMENT
- ENGINEERED SYSTEMS
- FLOOR MATTING
- OVERHEAD DOORS
- DRUM HANDLING
- FLAMMABLE CABINETS
- FLOW RACK
- GANTRY CRANES
- GUARD RAIL
- HAND TRUCKS
- HIGH SPEED ROLL UP DOORS
- HOISTS
- INDUSTRIAL BATTERIES
- INDUSTRIAL VACUUMS
- INPLANT OFFICES
- INSTALLATIONS
- JIB CRANES
- LAYOUTS/DESIGNS
- LIFTERS
- LIFT TABLES
- LOCKERS
- MACHINE MOVERS
- MESSAGE TRANSFER
- MEZZANINES
- MODULAR DRAWER CABINETS
- MOBILE AISLE STORAGE
- OFFICE FURNITURE
- OVERHEAD LIFTING EQUIPMENT
- PALLETS
- PALLET TRUCKS
- PERSONNEL LIFTS
- SAFETY LADDERS
- SCALES
- SELF DUMPING HOPPERS
- SERVICE/SERVICE CONTRACTS
- STACKER CRANES
- STORAGE PRODUCTS
- STRETCH WRAP MACHINES
- SHIPPING SUPPLIES
- TABLES
- TOILET PARTITIONS
- AND MANY MORE...

CONVEYOR

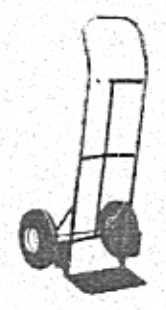


SLINGS



RACKING/SHELVES

WRAPPERS



HAND TRUCKS

Beaton Industrial, Inc.

6083 Trenton Road
Utica, NY 13502

Ph. 1-800-724-4052 (N.Y. Only)

Ph. 1-315-797-9346

Fax 1-315-797-9321

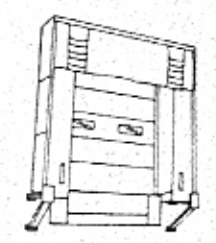
e-mail:

beaton@deamscape.com

Web:

www.BeatonIndustrial.com

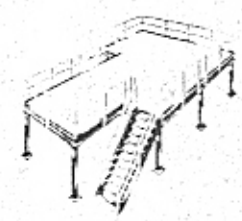
SHOP EQUIPMENT



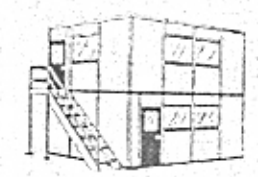
DOCKS, DOORS, SEALS



PULLERS



MEZZANINES



INPLANT OFFICES

HOIST AND CRANE REPAIR CENTER
INSTALLATIONS, PARTS, SERVICE
DESIGN/LAYOUT/ FABRICATIONS,
APPLICATION STUDIES
CRANE & HOIST INSPECTIONS



CASTERS

"Specializing In Materials Handling"

2-3. Longer Span Cranes

- On longer span cranes it may be desirable to add diagonal braces between the span beam and the crane trucks as additional insurance against loss of truck alignment.
- Four pieces of $\frac{1}{4}$ inch flat stock or small angle iron about three feet long may be welded or bolted diagonally between the bottom of the truck and the top of the span beam.

2-4. Load Rating

The load rating of the bridge should be stenciled or otherwise permanently and visibly marked on both sides of the span beam.

CAUTION

The designated load rating of the hoist or trolley should not exceed the rated load of the span beam (see Table 1).

SECTION III INSPECTION AND MAINTENANCE

3-1. Periodic Inspection

A regular inspection schedule should be established for the hoist on the crane. Inspect all parts of the crane at the same time as hoist inspection. Check for loose, cracked, or deformed parts. Refer to American National Standard (ANSI) B30.11, "Monorails and Underhung Cranes" for complete crane inspection and testing procedures.

3-2. Lubrication

All wheel bearings are permanently lubricated and sealed. No routine maintenance should be required.

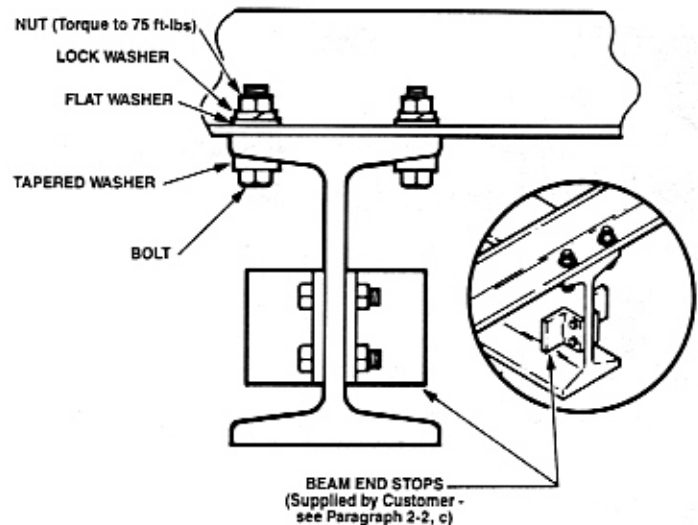


FIGURE 1. Hardware Placement

DUFF-NORTON HAS ALL YOU NEED TO HANDLE A VARIETY OF TOUGH INDUSTRIAL, MAINTENANCE AND CONSTRUCTION LIFTING JOBS.

Coffing® is America's first name in quality industrial hoisting equipment. Nowhere else can you find such a broad range of hoists with such consistent high quality construction and durability.

A detailed product catalog is available from your local Coffing hoist distributor, Duff-Norton District Sales Manager, or by writing directly to Duff-Norton Company.

Ask for Catalog 200, it includes:

Coffing® Electric Chain Hoists

Load ratings from $\frac{1}{4}$ to 5 tons. Two speed options; 47 models.

Coffing® Electric Wire Rope Hoists

Low headroom units. Load ratings from $\frac{1}{2}$ to 3 tons; 35 models.

Coffing® Hand Chain Hoists

Load ratings from $\frac{1}{2}$ to 25 tons. 99 models, some with optional capacity limiter.

Coffing® Lever Hoists

Variety of mechanisms in 36 models. Load ratings from $\frac{1}{4}$ to 15 tons.

Coffing® Hoist Trolleys

Plain, geared and motorized models. Load ratings from $\frac{1}{4}$ to 25 tons.

WARNING: The hoisting equipment described in these instructions is intended for industrial use only and should not be used to lift, support, or otherwise transport people.

AVAILABLE FROM YOUR LOCAL
DUFF-NORTON COFFING®/DUFF
LYNX® HOIST DISTRIBUTOR:

 **Duff-Norton**

P.O. Box 7010
Charlotte, NC 28241-0710

Customer Service (704) 588-2720
Parts Service (704) 588-2323
FAX (704) 588-8466