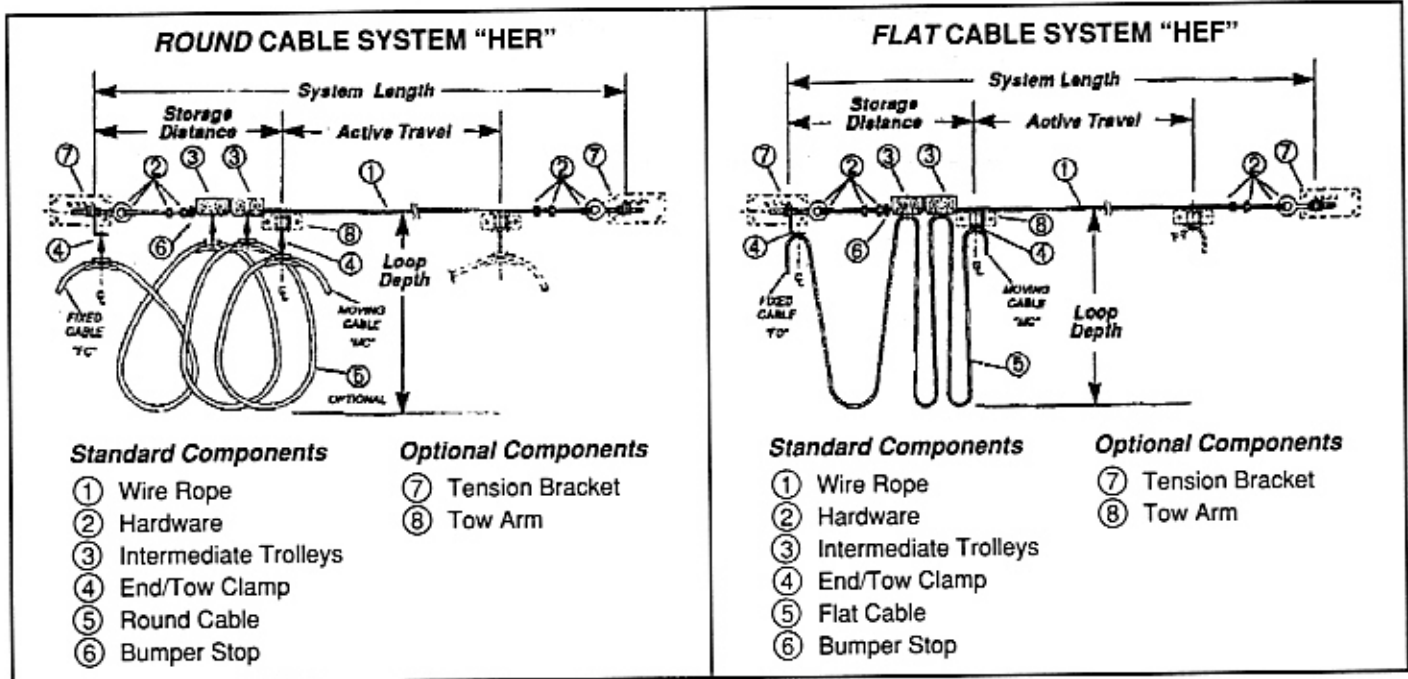


COFFING®

INSTALLATION INSTRUCTIONS

PUBLICATION PART NO. CF-680-2

WIRE ROPE FESTOONING



CABLE LENGTH

Two (2) factors make up the length of cable you must cut for your festoon system.

- ① **ACTIVE CABLE** (required for ACTIVE TRAVEL & STORAGE DISTANCE)
- ② **EXTRA CABLE** (for termination at fixed and moving end)

- ① **ACTIVE CABLE**
Multiply the number of trolleys (E) plus one (1) trolley by the clamp-to-clamp cable length (F). Multiply this total by a factor of 1.1.

Example:

Kit No. HER-35 has four (4) trolleys and needs clamp-to-clamp cable of 6.52 ft.

$$\begin{aligned} \text{ACTIVE CABLE} &= [6.52 \times (4 + 1)] \times 1.1 \\ &= (6.52 \times 5) \times 1.1 = 32.6 \times 1.1 \\ &= 35.86 \text{ ft. or } 36 \text{ ft.} \end{aligned}$$

- ② **EXTRA CABLE** (Fixed End and Moving End)
Determine how much cable you will need to go from the fixed end clamp to termination (FC) AND from the moving low clamp to termination (MC). See system layout above.

- ① (ACTIVE CABLE) + ② (EXTRA CABLE) = TOTAL CABLE LENGTH

ROUND System Installation Data

The information provided in the table below will assist you when installing your festoon system. Items "E" and "F" on the right are used in calculating the length of cable to cut.

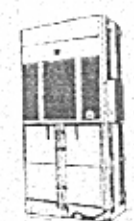
Product Code	ROUND Cable Kit No.	A Active Travel (ft.)	B Loop Depth (in.)	Max. Cable Weight (lbs./ft.)	C System Length (ft.)	D Storage Distance (ft.)	E No. of Trolleys	F Clamp-to-Clamp Cable Length (ft.)
08006	HER-35	35.00	36.00	1.05	38.10	1.40	4	6.52
08007	HER-50	50.00	48.00	1.05	53.70	1.97	6	8.52

FLAT System Installation Data

The information provided in the table below will assist you when installing your festoon system. Items "E" and "F" on the right are used in calculating the length of cable to cut.

Product Code	FLAT Cable Kit No.	A Active Travel (ft.)	B Loop Depth (in.)	Max. Cable Weight (lbs./ft.)	C System Length (ft.)	D Storage Distance (ft.)	E No. of Trolleys	F Clamp-to-Clamp Cable Length (ft.)
08008	HEF-35	35.00	36.00	1.09	39.40	2.21	4	6.25
08009	HEF-50	50.00	48.00	1.09	55.10	2.76	6	8.25

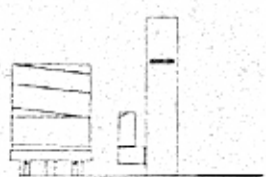
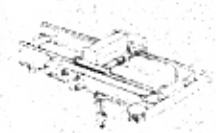
BEATON



OVERHEAD EQUIPMENT
HOISTS

ERGONOMICS

HYDRAULIC
BALERS



CONVEYOR

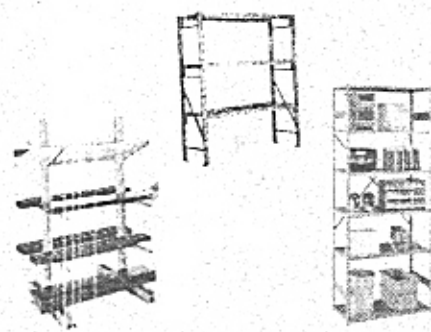
BRIDGE CRANES

WRAPPERS

AIR CURTAINS
BALERS/COMPACTORS
BELOW HOOK
BENCHES/CARTS/TOOLS
BRIDGE CRANES
CABINETS
CASTERS/WHEELS
CONTAINERS/WHEELS
CONVEYORS
DOCK EQUIPMENT
ENGINEERED SYSTEMS
FLOOR MATTING
OVERHEAD DOORS
DRUM HANDLING
FLAMMABLE CABINETS
FLOW RACK
GANTRY CRANES
GUARD RAIL
HAND TRUCKS
HIGH SPEED ROLL UP DOORS
HOISTS
INDUSTRIAL BATTERIES
INDUSTRIAL VACUUMS
INPLANT OFFICES
INSTALLATIONS
JIB CRANES
LAYOUTS/DESIGNS
LIFTERS
LIFT TABLES
LOCKERS
MACHINE MOVERS
MESSAGE TRANSFER
MEZZANINES
MODULAR DRAWER CABINETS
MOBILE AISLE STORAGE
OFFICE FURNITURE
OVERHEAD LIFTING EQUIPMENT
PALLET TRUCKS
PERSONNEL LIFTS
SAFETY LADDERS
SCALES
SELF DUMPING HOPPERS
SERVICE/SERVICE CONTRACTS
STACKER CRANES
STORAGE PRODUCTS
STRETCH WRAP MACHINES
SHIPPING SUPPLIES
TABLES
TOILET PARTITIONS
AND MANY MORE...



SLINGS



RACKING/SHELVES



SHOP EQUIPMENT



HAND TRUCKS

Beaton Industrial, Inc.

6083 Trenton Road
Utica, NY 13502

Ph. 1-800-724-4052 (N.Y. Only)

Ph. 1-315-797-9346

Fax 1-315-797-9321

e-mail:

beaton@deamscape.com

Web:

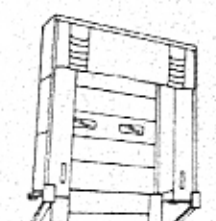
www.BeatonIndustrial.com



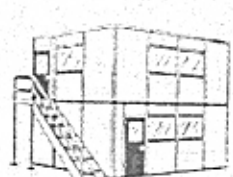
PULLERS



MEZZANINES



DOCKS, DOORS, SEALS



INPLANT OFFICES

HOIST AND CRANE REPAIR CENTER
INSTALLATIONS, PARTS, SERVICE
DESIGN/LAYOUT/ FABRICATIONS,
APPLICATION STUDIES
CRANE & HOIST INSPECTIONS



CASTERS

"Specializing In Materials Handling"

WIRE ROPE SAG — *Be Aware*

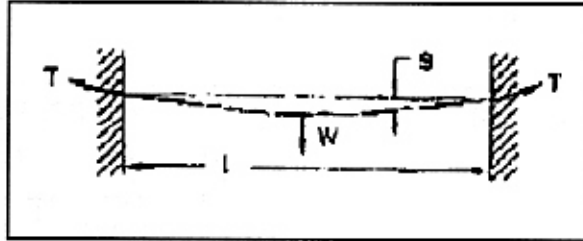
Your wire rope festoon system may sag when installed due to the weight of components and cable. Take care to tension wire rope so that cable loops travel freely above any surface or objects.

**WIRE ROPE TENSION
MUST NOT EXCEED 1050 LBS.**

If necessary, determine the tension in the wire rope and/or the wire rope sag using the formula below.

$$T \text{ (lbs.)} = \frac{W \times L}{8 \times S}$$

T = Tension (lbs.)
W = System Weight (lbs.)
L = System Length
S = Sag



P.O. BOX 7010
Charlotte, NC 28241-7010

Customer Service (800) 477-5003
Parts and Service (800) 477-5004
FAX (704) 588-8466

Duff-Norton Manufactures:
Duff-Norton® Actuators • Mechanical Jacks • Rotary Unions® • Coffing® Hoists
Duff Lynx® Hoists • Yale® Hoists • Shop King Hoists • Little Mule® Products • American Lifts

1M791