

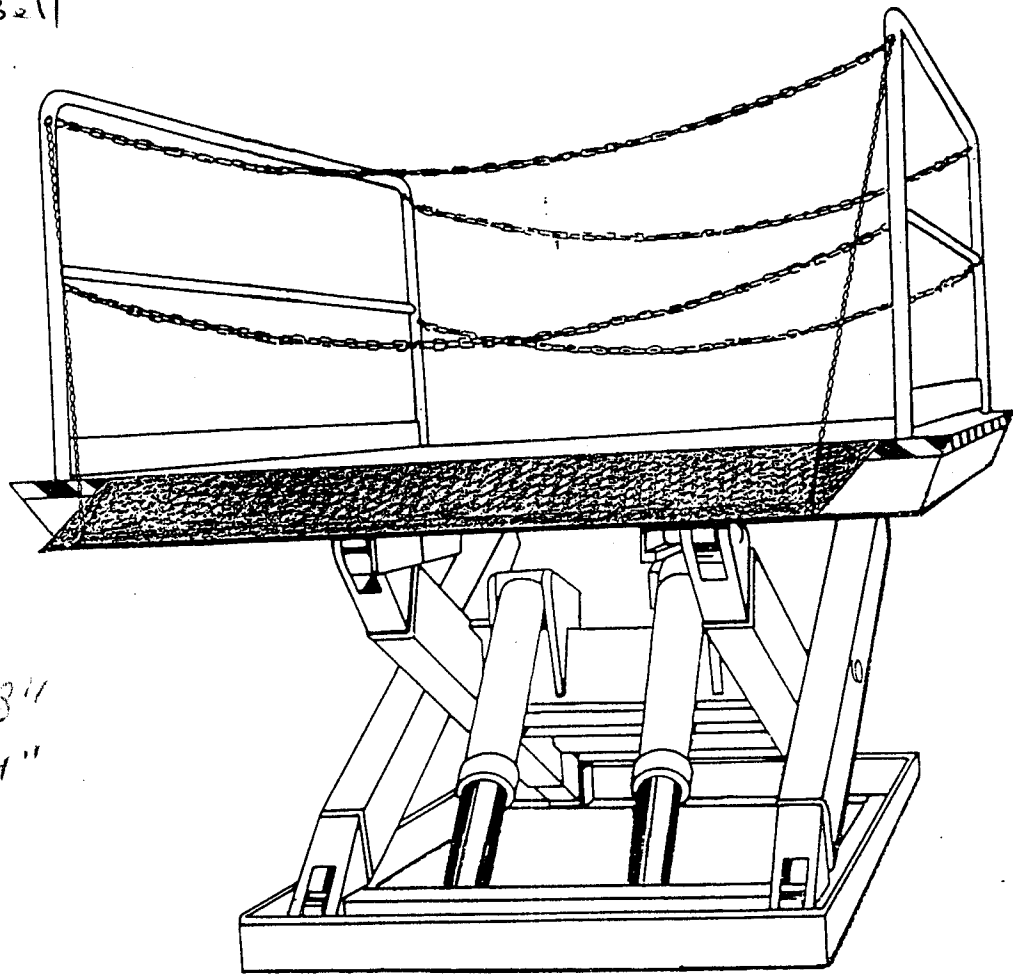
WORKING COPY

OWNERS MANUAL

Rolling Guides

HYDRAULIC DOCK LIFT

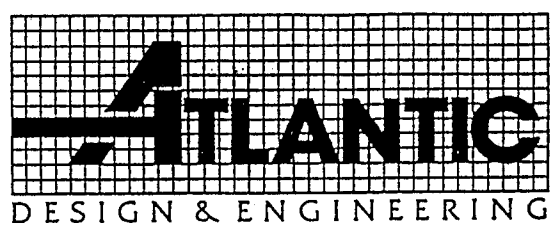
2PCS
60" chain
new Bell



8 1/2" Deep
Pit
10 1/2" In
from concrete
4 1/2" Bumpers

98"
74"

Atlantic Mfg. Corp.
Box 202A
Athens, New York 12015
(518) 943-5522
323-3030



CAUTION!

BEFORE attempting to install, operate or service Lift, read the manual provided. Thoroughly understand the operation of all components. **DO NOT ALLOW PERSONS UNFAMILIAR WITH THIS EQUIPMENT TO INSTALL, OPERATE OR SERVICE SAME.** Be sure all persons are properly indoctrinated with information necessary to fully understand these products. Contact your authorized Atlantic representative or factory whenever problems arise or information provided is not fully understood.

SAFETY FIRST: Negligent work habits at the loading dock can result in personal injury and/or damage to equipment and freight. Always follow dock safety regulations. This should include the wearing of protective clothing, gloves, eyewear, foot gear and hard hat as conditions warrant.

CAUTION: BEFORE loading or unloading begins be certain truck wheels are chocked. Wheel chocks should be removed **ONLY** when clearance is provided by dock supervisor.

CAUTION: ALWAYS be sure dock Lift is stored at dock level after loading or unloading. Be sure operating instructions are followed.

CAUTION: Be sure Lift is secure before proceeding with any maintenance tasks. **ALWAYS** use the service blocks provided.

CAUTION: NEVER place hands, arms feet or legs in a position where a moving load could cause injury. **NEVER** allow yourself or your clothing to be exposed to a situation that could cause personal harm.

NOTICE: Periodically inspect your dock Lift to insure there is no damaged or worn part which could result in equipment breakdown or personal injury. Consult Specifications for correct hydraulic fluid type and system capacity. Follow maintenance recommendations for essential service information.

BEFORE attempting to correct any malfunction which is not understood consult with Atlantic Mfg. Corp.

WARNING: Abuse or negligent use of this product can result in personal injury and/or structural damage to the equipment.

The proper operation and use of this product is essential to assure safety at the loading dock. **ATLANTIC MFG. CORP.** shall not, in any event, be liable for any injuries or damages of any kind, nor loss of the use of any equipment, as a result of improper installation, misuse, abuse or improper operation of this product.

Installation Instructions

BEFORE attempting to install or operate Lift, read the manual provided and thoroughly understand operation of all components. **DO NOT** allow persons unfamiliar with this equipment to install or operate. Contact your authorized Atlantic representative or factory whenever problems arise or information provided is not fully understood.

BE SURE to follow the **CAUTION** reminders on Page 1 of this manual when installing your Atlantic Dock Lift.

1. Check Lift for possible transit damage.
2. Check pit for verification of all dimensions.
3. Locate motor/pump unit and install. Check hydraulic fluid level (See Oil Specification for fluid level and type. **NOTE:** It is recommended that power unit be installed prior to installation of Lift. All underground hydraulic lines must be flushed with clean oil.
4. Use the eyeplates, included, to lift the unit with appropriate chains and lift equipment. Do not remove the shipping bolts until the Lift is permanently set.
5. Using suitable equipment, lift the unit and position at the pit allowing access at rear of pit to attach hoses. Block Lift for safe maneuvering from behind and under rear portion of frame.
6. Remove the shipping bolts. Lift the unit with a fork truck making sure the base frame assembly remains on the ground and that the scissor legs open out. Insert the Maintenance Supports one on each side (See Pit Layout for position). Lower platform until the Leg Rollers touch the Maintenance Supports. Be sure Maintenance Safety Bars are secure. Feed hydraulic hose(s) to fitting block at frame. From pump unit thru conduit provided, securely attach hoses at both ends.
7. Remove blocking and gently lower Lift into pit. Be sure hoses are clear of frame and do not become pinched or kinked. Set Lift firmly on pit floor. Shift to provide equal/adequate clearance on all sides.
8. Remove shipping bolts. Operate Lift Pump to raise Lift. Inspect for proper clearance along all sides where wall contact may become an issue. Lower Lift and observe clearances.
9. Lift position should be level. Shim under frame at pivot points, cylinder mounts, and roller contact area to firmly support frame to pit floor. **NOTE: ALWAYS** use Service Blocks to secure Lift in UP position whenever work under Lift is performed. Lower Lift to rest against Service Blocks.
10. Firmly mount Lift frame to pit floor with appropriate masonry anchors. Do not use lead shields and lag screws. Use wedge lock studs 5" to 6" long.
11. Raise Lift from Service Blocks by momentarily operating pump unit via push-button. Remove Service Blocks.

12. Lower Lift to full down position. If Lift sits lower than desired, add shim block to down support post to correct lowering position.
13. With lower height set, again raise Lift and position Service Blocks. Weld all shims in position to avoid creepage. Weld Lift down stop blocks if material was added. Remove Service Blocks.
14. Operate Lift thru several more cycles to verify operation and insure a clean hydraulic system.

Operating Instructions

BEFORE attempting operation of the Atlantic Dock Lift, read the manual provided and thoroughly understand operation of all components. **DO NOT** allow persons unfamiliar with this equipment to operate same.

BE SURE to follow **CAUTION** reminders on Page 1 when operating your Atlantic Dock Lift.

CAUTION: **ALWAYS** load the Lift properly. Load should be centered on the platform as much as possible.

CAUTION: **DO NOT** attempt operation of Lift if there is a malfunction or if Lift is in need of repairs.

OPERATION:

Operation of the Lift begins by pressing the "UP" or "DOWN" pushbutton. The "UP" button starts the motor which operates the hydraulic pump system to lift the platform. The "DOWN" button opens the valve to allow the platform to lower.

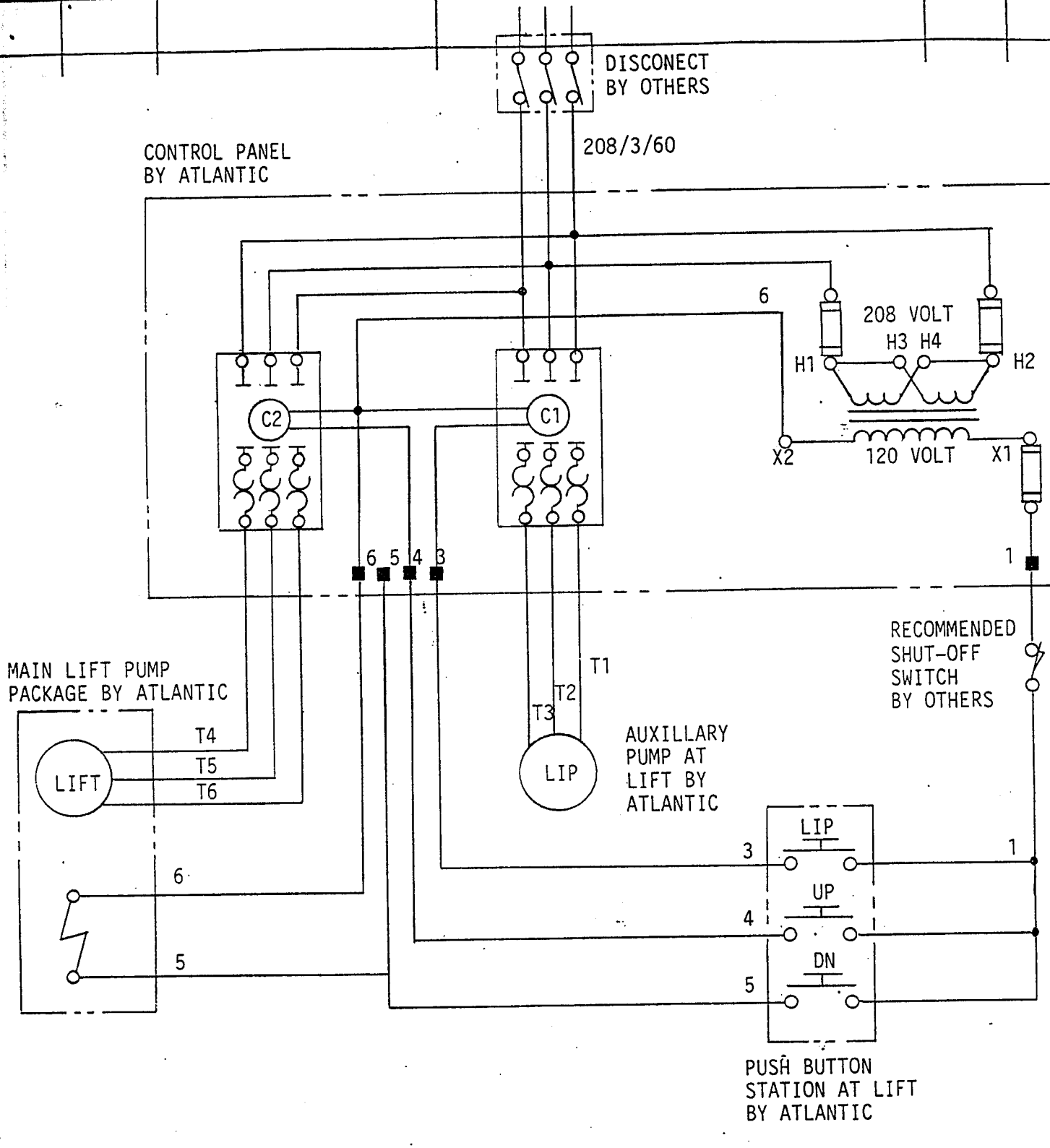
To **RAISE** Lift press and hold the "UP" push-button until platform reaches the desired height. Platform will continue to rise until push-button is released. Release of the "UP" button, will cease Lift rise and hold the Lift at raised elevation.

To **LOWER** Lift press and hold the "DOWN" push-button. Platform will continue to lower until push-button is released. Upon release of the "DOWN" button, Lift will cease to lower.

LIP SECTION: Hinged lip plate is used to bridge onto freight carrier. **ALWAYS** be sure lip plate is secured in stored position via latch provided. To **OPERATE:** Release latch by pressing downward on thumb lever of latch unit. Insert operating bar into socket to swing lip section onto truck bed. Remove operating bar during loading operations. Use operating bar to swing lip back to stored position. Push down on top of plunger to reset locking action of lip latch.

NOTE: Any load greater than rated capacity cannot be lifted. Structural or operational damages can occur. Avoid overloading. Evenly distribute all weight on ramp prior to operation.

ITEM	QTY.	NAME	DESCRIPTION
------	------	------	-------------



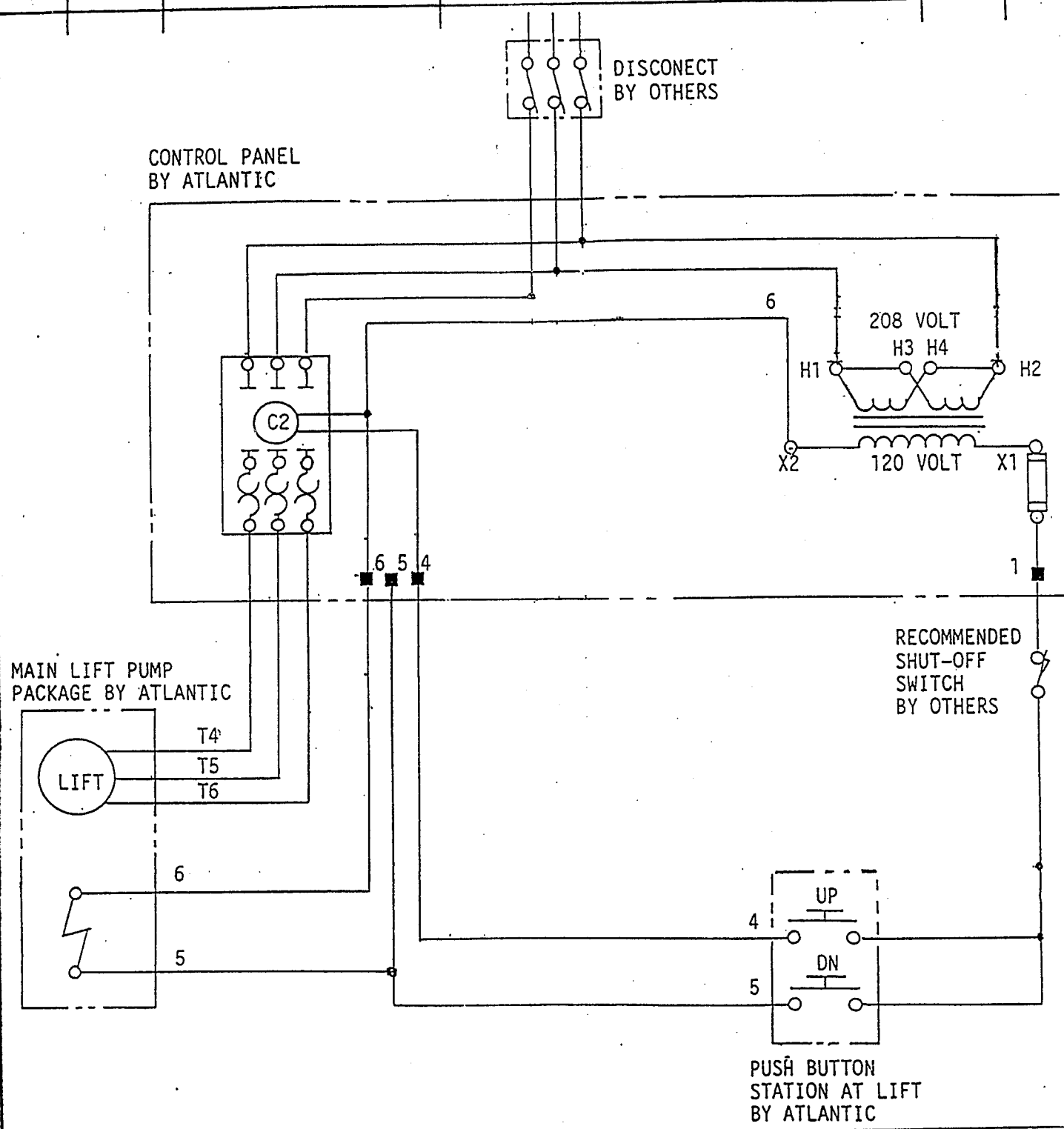
ATLANTIC MFG. CORP. ATHENS, NEW YORK

DRAWN BY RF	DATE 12/91	CHECKED BY REP II	SCALE
TOLERANCES UNLESS SPECIFIED			
MACHINED PARTS	± 1/32"	3 DECIMAL PLACES	± 0.005
FABRICATED PARTS	± 1/32"	ANGLES	± 30'

WIRING DIAGRAM FOR
HLD DOCK LIFT
POWERED LIP 208 - 230/3/60

DRAWING NUMBER	5716
----------------	------

ITEM	QTY.	NAME	DESCRIPTION
------	------	------	-------------



				MFG. CORP. ATHENS, NEW YORK		WIRING DIAGRAM FOR HLD DOCK LIFT MANUAL LIP 208 - 230/3/60	
DRAWN BY RF	DATE 12/91	CHECKED BY REP II	SCALE	DRAWING NUMBER			
TOLERANCES UNLESS SPECIFIED						DRAWING NUMBER	
MACHINED PARTS FABRICATED PARTS	$\pm 1/64"$ $\pm 1/32"$	3 DECIMAL PLACES ANGLES	± 0.005 $\pm 30'$	DRAWING NUMBER			

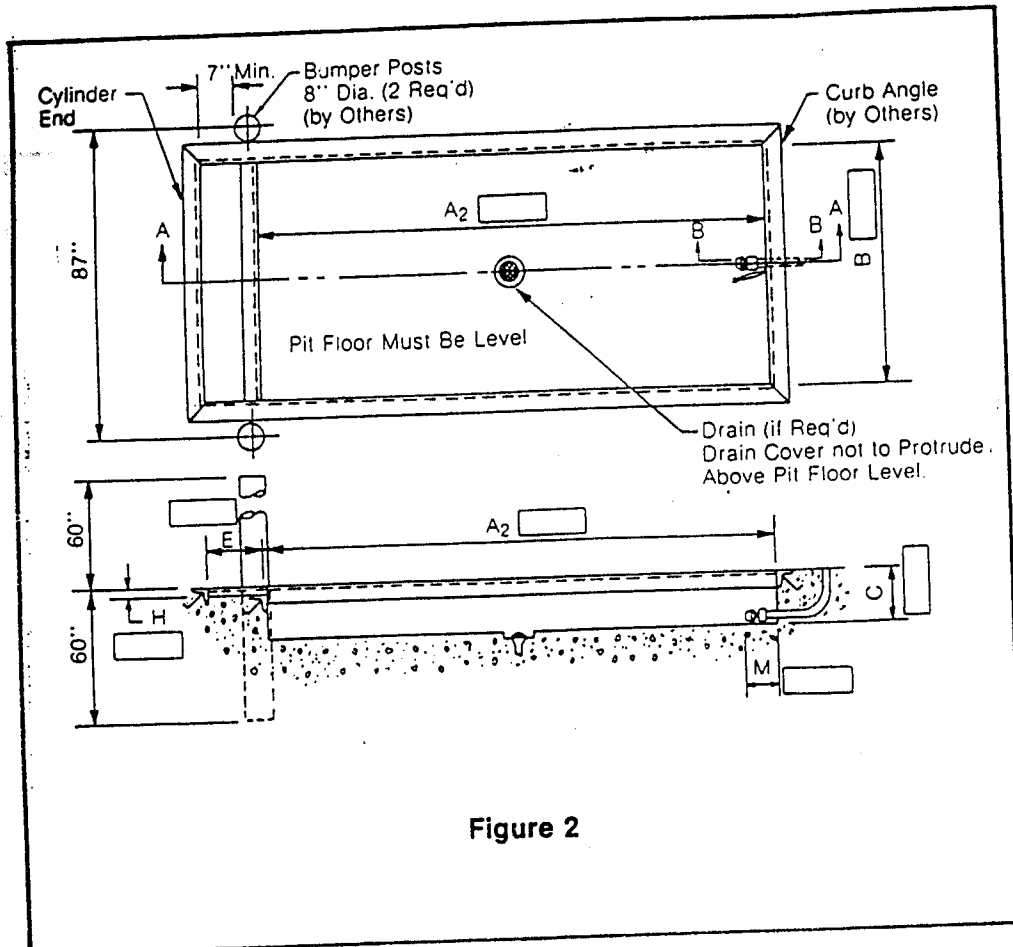


Figure 2

FORMULAS FOR PIT LAYOUTS

(Fig. 2)

$A_2 = \text{Pit Length} = \text{Platform Length} + 7\frac{1}{2}"$

$B = \text{Pit Width} = \text{Platform Width} + 1\frac{1}{2}"$

$C = \text{Pit Depth} = \text{Lowered Height} (+ \frac{1}{2} - 0)$

$E = \text{Bridge Recess Length} = \text{Bridge Length} - 5\frac{1}{2}"$

$H = \text{Bridge Recess Depth} = \frac{1}{2}"$

$M = \frac{(\text{Platform Length} - \text{Base Length})}{2}$

Note: 1. The Cylinder end is on the Left Side of the Pit.

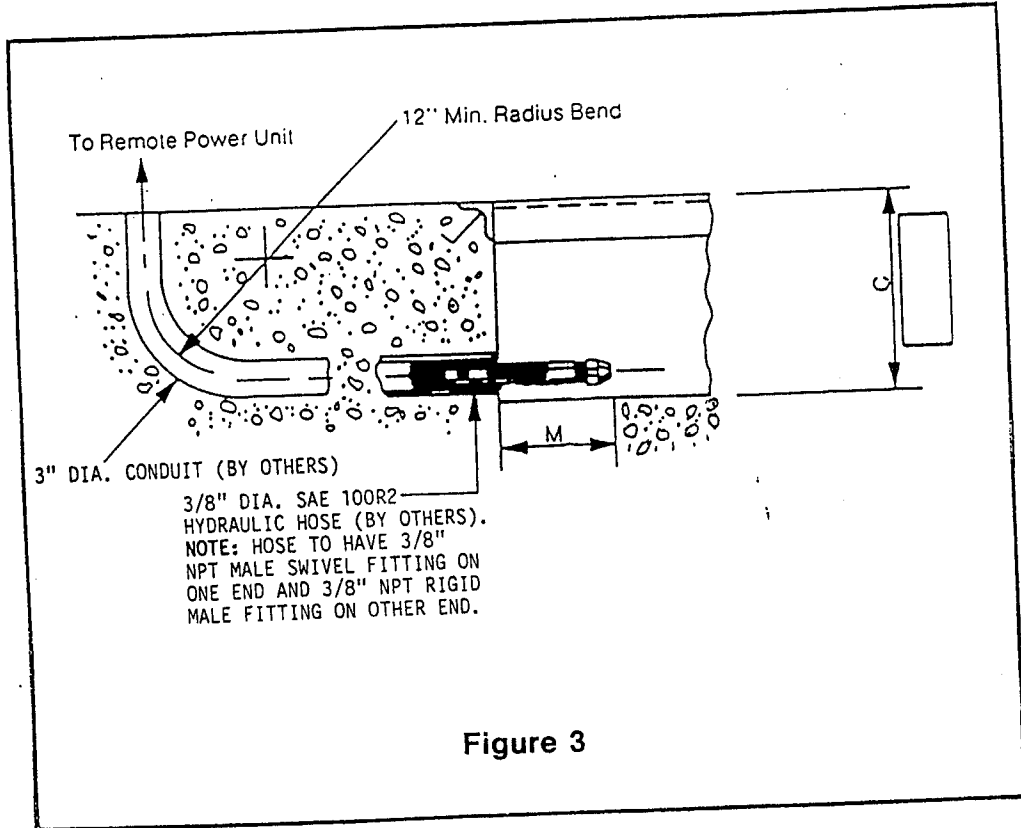


Figure 3

Typical Pit Layouts

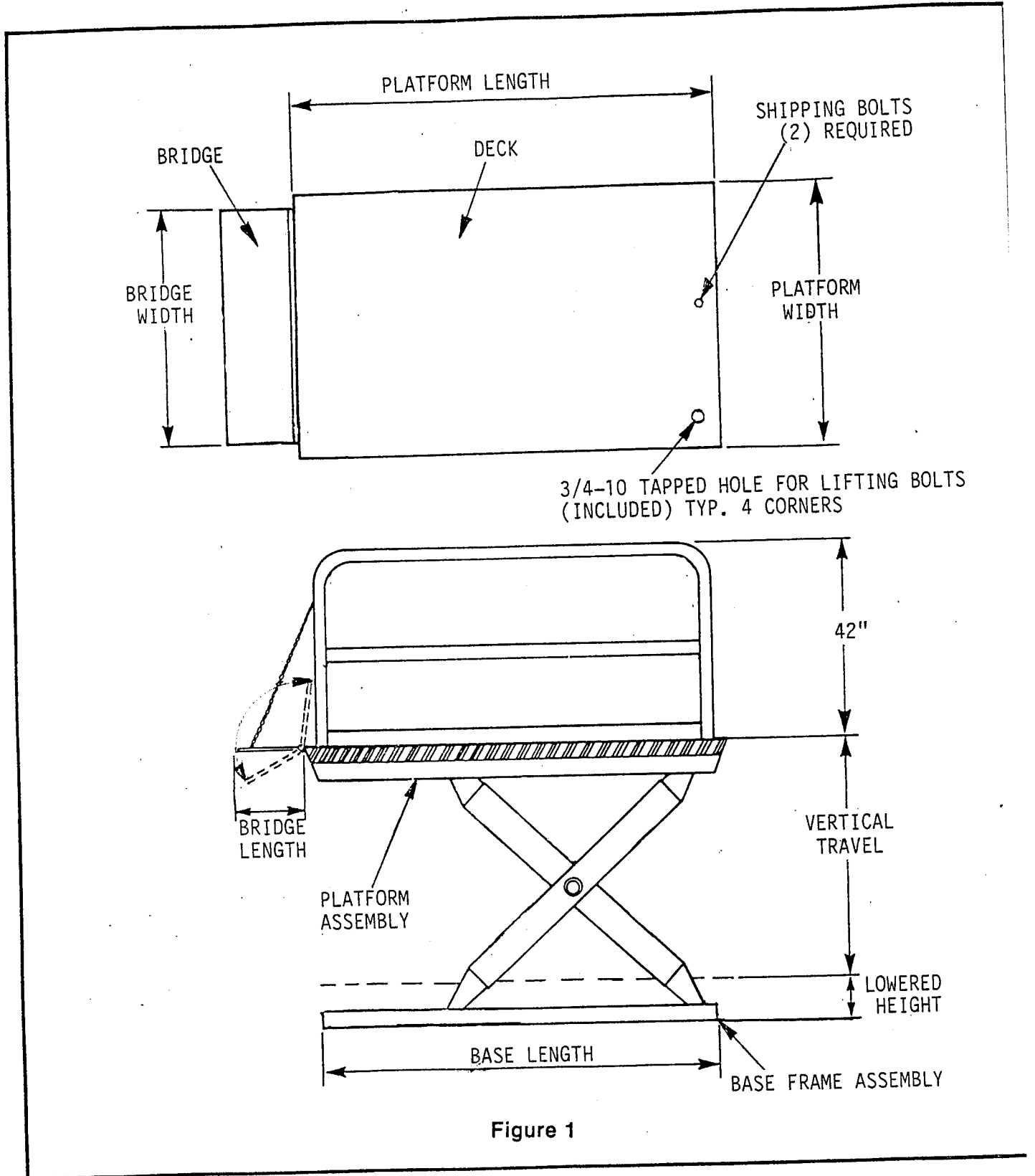


Figure 1

SPECIFICATIONS

HYDRAULIC PUMP UNIT: A totally enclosed unit consisting of a 5hp electric motor operated by single or three phase current; manifold block; submersed gear pump and reservoir.

Electrical Motor Specifications

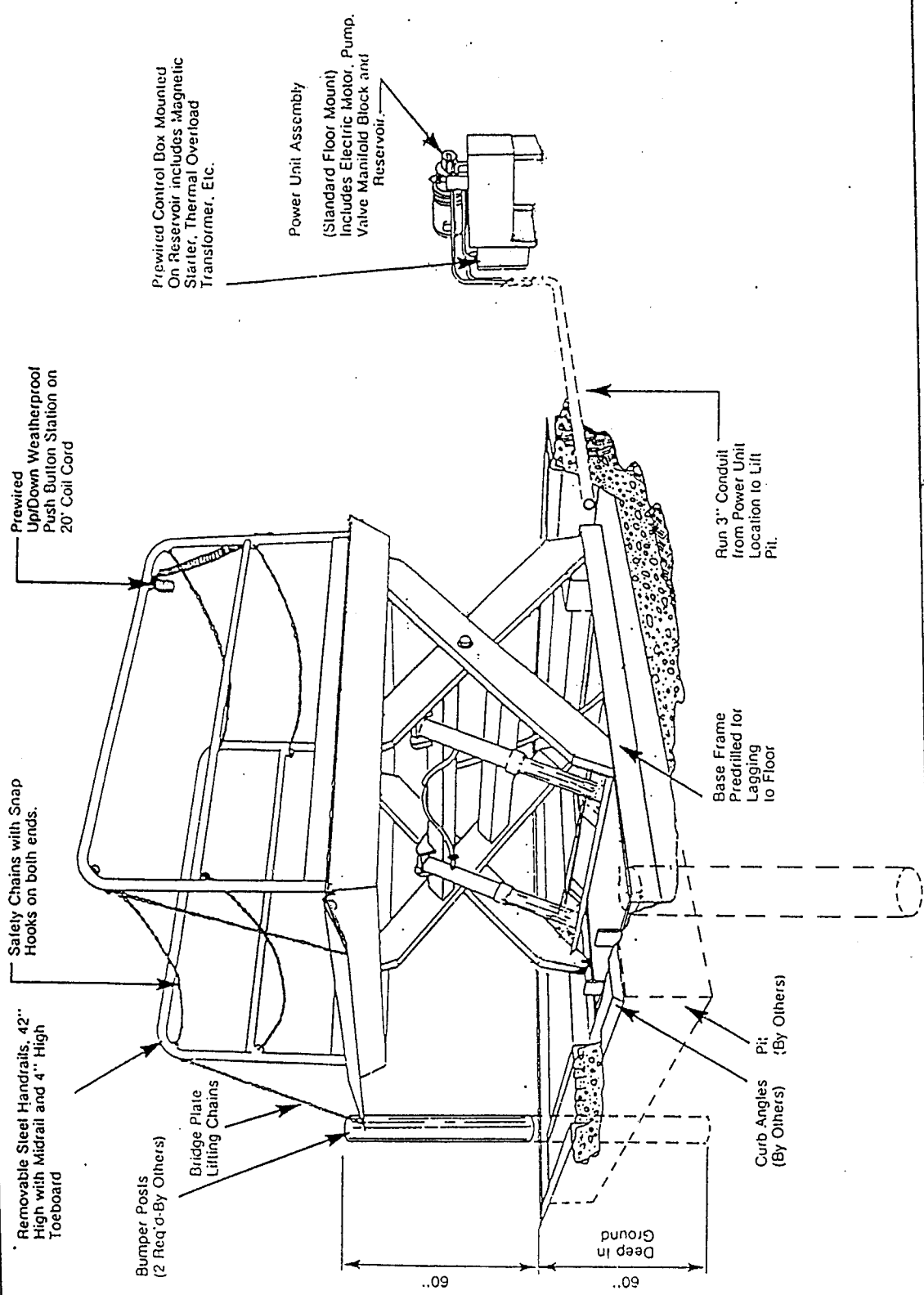
Motor Voltage (AC)	RPM	HZ	Phase	Amperage Draw	Amperage Required
230	1725	60	1	10.3	25.0
208	1725	60	3	6.0	14.8
230	1725	60	3	5.4	14.0
460	1725	60	3	2.7	7.0

CONTROL STATION: Steel enclosure with gasketed door housing, thermally protected magnetic starter, transformer, and two push-button controls.

HYDRAULIC FLUID CONTENT: Automatic Transmission Fluid, Type F
Aircraft Hydraulic Fluid, Type BB

REPLACEMENT FLUID: Automatic Transmission Fluid, Type F
Aircraft Hydraulic Fluid, Type BB

TANK FULL LINE: 1-1/2" Below Top (Lift in fully-lowered position).



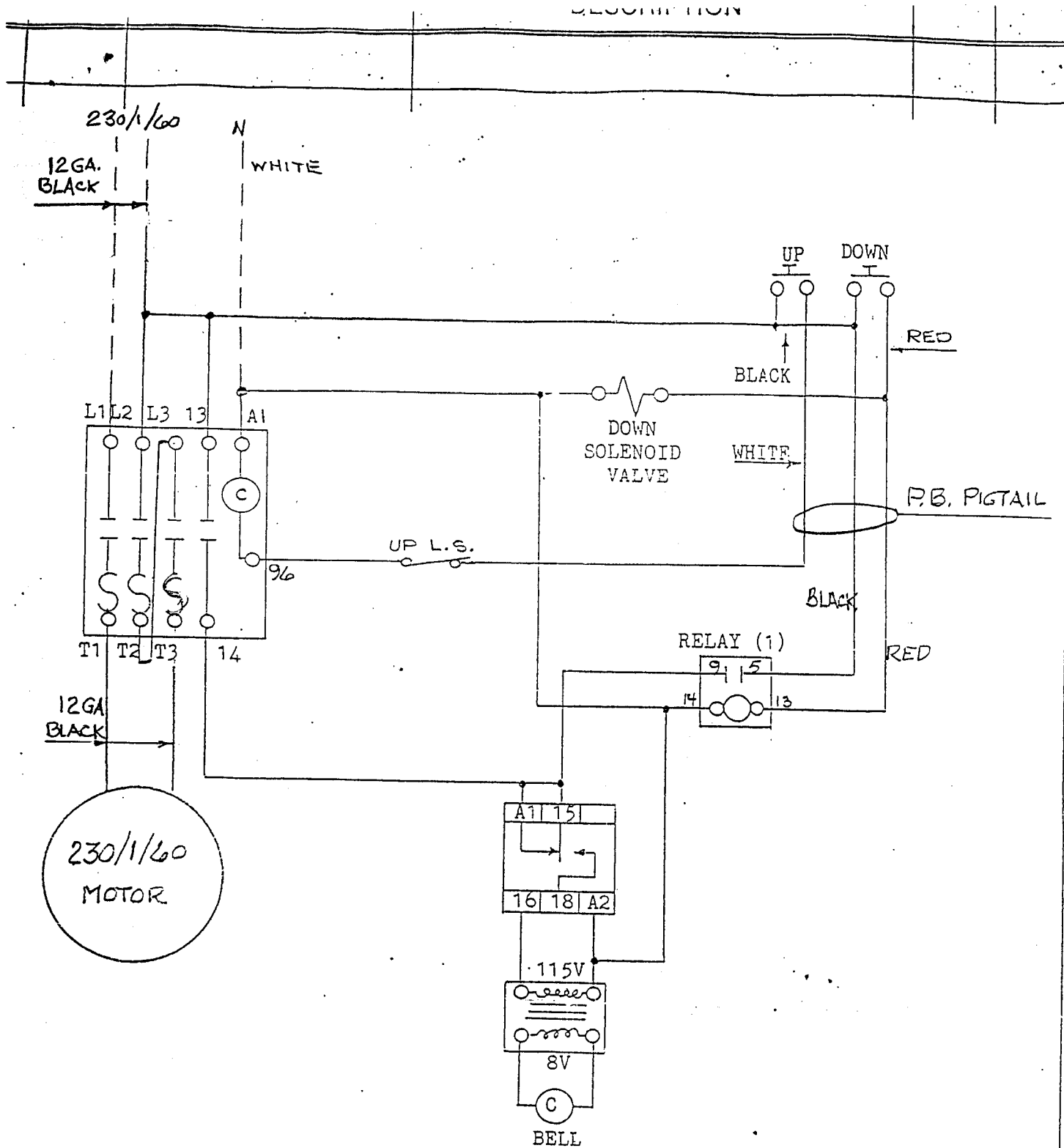
**GENERAL ARRANGEMENT
HYDRAULIC DOCK LIFT**

ATLANTIC MFG. CORP.
ATHENS
NEW YORK

DRAWN BY	DATE	CHECKED BY	SCALE
TOLERANCES UNLESS SPECIFIED			
MACHINED PARTS	± 1/4"	3 DECIMAL PLACES	± 0.005
FABRICATED PARTS	+ 1/4"	ANGLES	± .30'

DRAWING
NUMBER

DESCRIPTION



ATLANTIC MFG. CORP.
ATHENS, NEW YORK

SCIZZOR LIFT DOCK
LEVELER WIRING
SCHEMATIC

DATE	CHECKED BY	SCALE
6/91		~
TOLERANCES UNLESS SPECIFIED		
PARTS	± 1/32"	3 DECIMAL PLACES ± 0.005
ED PARTS	± 1/64"	ANGLES ± 30'

DRAWING NUMBER