

COFFING[®]

Cord Reel

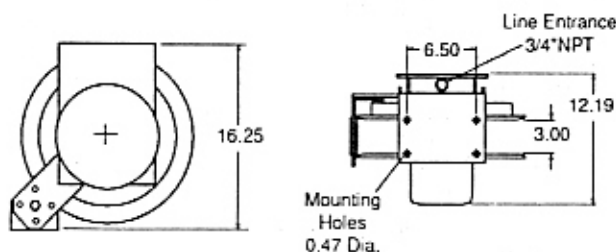
INSTALLATION AND MAINTENANCE INSTRUCTIONS

Reel Consists of Four (4) Basic Sections:

1. Frame Assembly—includes Junction Box
2. Spring Assembly
3. Spool Assembly—Includes Shaft and Bearings
4. Slip Ring Assembly

I. Installation of Reel

A. Mounting: The reel may be installed in any position which allows the main shaft to be horizontal. The reel should be located so the spool centerline is in line with the cable run. If optional pivot base is used, reel will be automatically self-aligning to direction of cable run. In addition to standard 3/8 (M10) mounting bolts, reel should be anchored with a safety chain between cable reel base and mounting surface to prevent potential reel drop.



II. Adjustment

A. Cable Guide: Cable guide is standard and may be used in any of four (4) positions. The guide must be oriented so cable pays-off reel in a straight line without bends. The procedure to set roller guide is as follows:

1. Remove guide arm mounting bracket bolts.
2. Remove screw, lockwasher, and nut from standard position of guide arm.

3. Position roller guide arm mounting bracket in new location and secure with previously removed hardware.

4. If required, loosen cable guide hold down screw and rotate cable guide to proper position. Tighten hold down screw.

B. Holding Dog: Ratchet and dog are standard equipment and are factory set in the "engaged" position. If constant spring tension is required, ratchet and dog may be disengaged by the following procedure:

1. Locate locking dog assembly screw on frame and remove. (Item No. 4 From Hole Location "A", Illustrated Parts List).

2. Rotate locking dog assembly to disengaged position. (Item No. 4, Illustrated Parts List).

3. Replace and tighten locking dog screw. (Item No. 4 Into Hole Location "B", Illustrated Parts List).

C. Spring Tension: The reel must be pre-tensioned before making output connections. Failure to pre-tension reel will result in insufficient spring tension to fully retract the cable. Proper spring tensioning procedure is as follows:

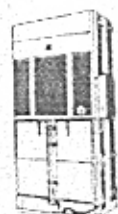
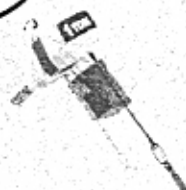
1. Locate reel nameplate on reel frame and note the number of pre-tension turns required for your particular reel.

2. Rotate reel in the clockwise direction (as viewed from the slip ring cover, Item No. 24, Illustrated Parts List) until the proper amount of pre-tension turns has been reached. All cable must remain on the spool during this step.

3. Pay-out cable to desired working length. At least one turn of cable should remain on spool. If the cable spool locks up prior to reaching the required length, either the reel was over-tensioned during step 2, or reel capacity has been exceeded for the given application. Failure to correct this condition will result in drastically shortened spring life and possible damage to other reel components.

4. Engage holding dog to prevent spool from turning and complete cable working-end connections

BEATON



OVERHEAD EQUIPMENT
HOISTS

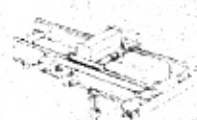
ERGONOMICS

HYDRAULIC
BALERS

AIR CURTAINS
BALERS/COMPACTORS
BELOW HOOK
BENCHES/CARTS/TOOLS



CONVEYOR



BRIDGE CRANES

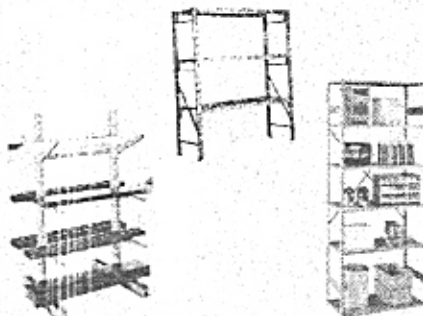


WRAPPERS

CABINETS
CASTERS/WHEELS
CONTAINERS/WHEELS
CONVEYORS
DOCK EQUIPMENT
ENGINEERED SYSTEMS
FLOOR MATTING
OVERHEAD DOORS
DRUM HANDLING
FLAMMABLE CABINETS



SLINGS



RACKING/SHELVES



SHOP EQUIPMENT

FLOW RACK
GANTRY CRANES
GUARD RAIL
HAND TRUCKS
HIGH SPEED ROLL UP DOORS
HOISTS



HAND TRUCKS

Beaton Industrial, Inc.

6083 Trenton Road
Utica, NY 13502

Ph. 1-800-724-4052 (N.Y. Only)

Ph. 1-315-797-9346

Fax 1-315-797-9321

e-mail:

beaton@deamscape.com

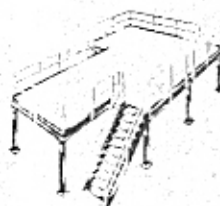
Web:

www.BeatonIndustrial.com

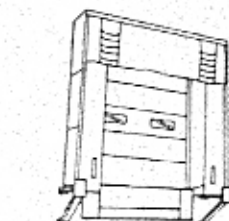
INDUSTRIAL BATTERIES
INDUSTRIAL VACUUMS
INPLANT OFFICES
INSTALLATIONS
JIB CRANES
LAYOUTS/DESIGNS
LIFTERS
LIFT TABLES
LOCKERS
MACHINE MOVERS
MESSAGE TRANSFER
MEZZANINES
MODULAR DRAWER CABINETS
MOBILE AISLE STORAGE
OFFICE FURNITURE
OVERHEAD LIFTING EQUIPMENT
PALLET TRUCKS
PERSONNEL LIFTS
SAFETY LADDERS
SCALES
SELF DUMPING HOPPERS
SERVICE/SERVICE CONTRACTS
STACKER CRANES
STORAGE PRODUCTS
STRETCH WRAP MACHINES
SHIPPING SUPPLIES
TABLES
TOILET PARTITIONS
AND MANY MORE...



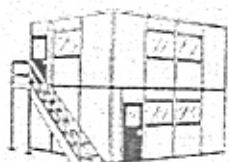
PULLERS



MEZZANINES



DOCKS, DOORS, SEALS



INPLANT OFFICES



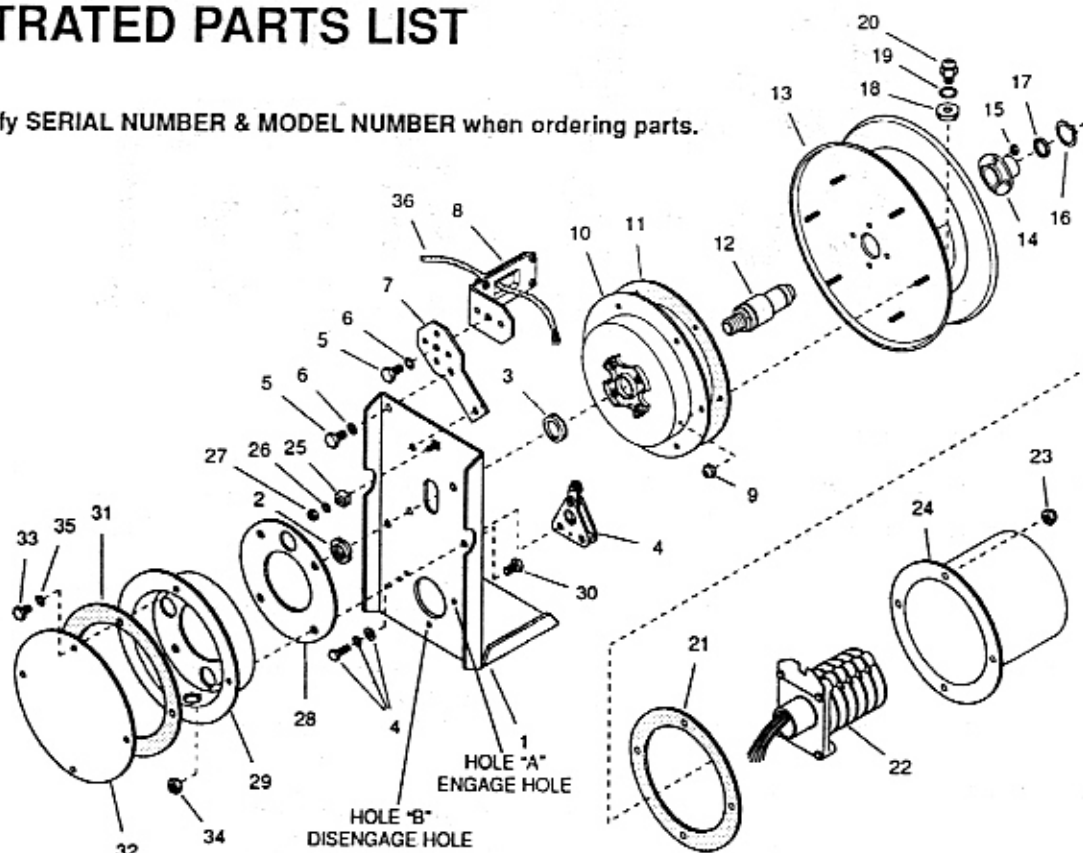
CASTERS

HOIST AND CRANE REPAIR CENTER
INSTALLATIONS, PARTS, SERVICE
DESIGN/LAYOUT/ FABRICATIONS,
APPLICATION STUDIES
CRANE & HOIST INSPECTIONS

"Specializing In Materials Handling"

ILLUSTRATED PARTS LIST

Always specify SERIAL NUMBER & MODEL NUMBER when ordering parts.



Electric Cord Reel Replacement Parts

Covers Reels Manufactured After July 1, 1996

ITEM	PART NO.	DESCRIPTION	QTY.
1	021456	Frame Assembly	1
2	021484	Clamp Nut	1
3	025032	V-Clamp Seal	1
4	604093	Locking Dog (Includes Hardware)	1
5	028132	Hex Head Cap Screw, M10 x 25L	3
6	028138	Lockwasher, M10	3
7	021527	Mount Bracket	1
8	024466	Roller Guide Assembly	1
9	028144	Lock Nut, M5 x 0.8	6
10	021490	Spring Assy, DN-3-25-G & DN-4-25-G	1
10	021492	Spring Assy, DN-3-50-G & DN-4-45-G	1
11	021494	Spring Gasket	1
12	027445	Shaft	1
13	027412	Spool Assembly	1
14	027444	Flange Bushing	1
15	028144	Lock Nut, M5 x 0.8	4
16	107185	Retaining Ring	1
17	027456	Thrust Washer	1

ITEM	PART NO.	DESCRIPTION	QTY.
18	021513	Counter Nut	1
19	104336	O-Ring	1
20	021510	Cable Connector, .50-.70 Dia. Cable	1
21	018042	Cover Gasket	1
22	021520	Slip Ring Assembly, 1-4 Pole, 30A	1
23	028144	Lock Nut, M5 x 0.8	4
24	02149603	Slip Ring Cover, 1-4 Pole	1
25	01555101	Grounding Lug	1
26	028139	Lockwasher, Internal Tooth	1
27	028144	Lock Nut, M5 x 0.8	1
28	021479	Gasket, Junction Box	1
29	021480	Junction Box	1
30	028131	Hex Head Capscrew, M10 x 20L	3
31	018042	Cover Gasket	1
32	018043	Junction Box Cover	1
33	028136	Tapite Screw, M6 x 16L	4
34	028146	Lock Nut, M10 x 1.5	3
35	028140	Lockwasher, M6	4
36	See Slip-Ring Cover	Cable per Application Label on Slip-Ring Cover	

COFFING®
HOISTS

P.O. BOX 773 Wadesboro, NC 29170
Tel: (754) 694-2166 Fax: (800) 374-4963

CAT. No. CATALOG No.
SERIAL SERIAL

☒ AMP'S 600 VOLTS
No. OF PRE-TENSION TURNS

Cord Reel for Commercial / Industrial Use Only

UL Type 4 Enclosure **SP**

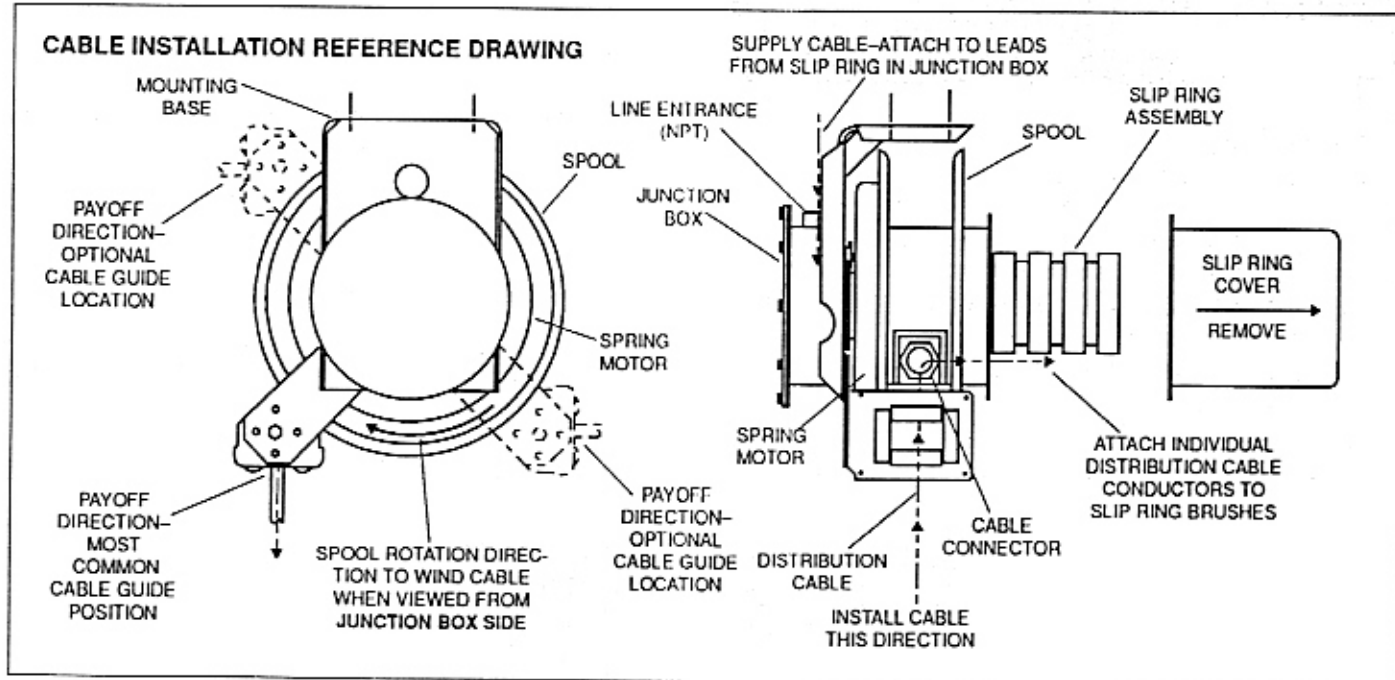
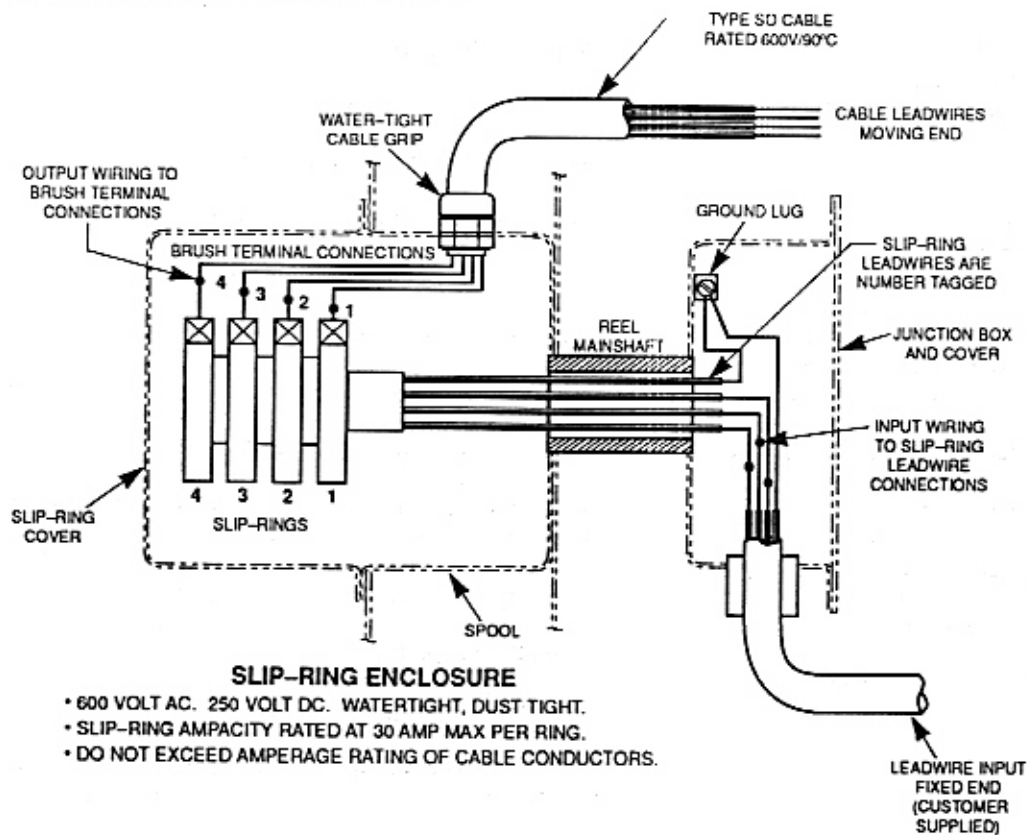
UL Listed 3289 Cord Reel 03-1983 Made in U.S.A.

REEL
I.D. PLATE

OPTIONAL ACCESSORIES

PART NO.	DESCRIPTION	QTY.
602072	Cable Stop	Option
602067	Swivel Base, CM-14	Option

ELECTRICAL CONNECTIONS



COFFING[®]

HOISTS

III. Servicing Procedures

A. Spring Replacements: If reel loses tension and fails to rewind cable onto spool, the spring is broken and must be replaced. The procedure to replace the spring is as follows:

1. Turn off all electric power.
2. Disconnect output wiring and allow cable to retract onto spool. Ensure all tension is off spring by manually rotating spool.
3. Rewind all cable onto spool by manually rotating spool in counterclockwise direction (as viewed from slip ring side). Continue to rotate spool if any amount of residual tension is detected. Once tension is eliminated, proceed to Step 3.
4. Using a 3/16" hex allen wrench, remove mainshaft clamp nut.
5. Spin off nut while supporting spool.
6. Remove entire spool assembly from frame.
7. Remove V-Ring seal from spring assembly.
8. Remove spring assembly holding nuts and remove spring assembly from mainshaft.
9. Install new spring assembly on shaft and reassemble reel in reverse order.
10. Adjust spring tension by following procedure outlined in step II C.

WARNING

Removal of spring from housing may result in injury. The main housing cover is sealed to the housing to discourage any attempt to remove the spring from its housing in case of failure. Clock-type power springs can be dangerous to handle, even if broken, which is the reason the housing is sealed. A replacement spring motor is furnished sealed in its housing and the old unit is designed to be discarded completely.

B. Slip Ring Replacement:

1. Turn off all electric power.
2. Disconnect input wiring in junction box.
3. Engage holding dog to prevent spool from rotating.
4. Remove locknuts holding slip ring cover and gasket.
5. Disconnect cable leads from slip ring terminals.
6. Loosen two set screws in collar using a 1/8" hex allen wrench.
7. Pull slip ring assembly off of shaft.
8. Install new slip ring assembly on shaft and reassemble reel in reverse order.
9. Disengage holding dog to permit spool rotation.

C. Cable Replacement:

1. Turn off all electric power.
2. Disconnect output wiring and allow cable to retract onto spool. Ensure all tension is off spring by manually rotating spool.
3. Remove cable from spool by looping over spool flange and slip ring cover.
4. Remove slip ring cover.
5. Disconnect cable leads from slip ring terminals.
6. Loosen counternut on cable gland (inside slip ring housing) and pull cable out of spool.
7. Insert new cable thru cable gland and connect cable leads to slip ring terminals.
8. Reassemble reel in reverse order.
9. Rewind cable onto spool by laying cable out in straight line and rotating spool in counterclockwise direction (as viewed from slip ring cover).
10. Adjust spring tension by following procedure outlined in step II C.

COFFING® HOISTS

P.O. BOX 779
Wadesboro, NC 28170
Phone: (800) 477-5003
(704) 694-2156
FAX: (800) 374-6853
(704) 694-6829