

COFFING®

INSTALLATION INSTRUCTIONS

AC SERIES PENDANT CONTROL

PUBLICATION PART NO. AC-680-2

Pendant Control Part No. Asm.	Pendant Drop Ft. (m)
17301	6.58 (2.00)
17306	12 (3.66)
17311	17 (5.16)
17316	22 (6.71)
17321	32 (9.75)

ASSEMBLY INSTRUCTIONS

The pendant control is delivered complete for direct connection to the air hoist.

1. Remove the casing (A) and the screw (B) from the valve housing (C).
2. Remove the cover (27) from the cylinder holder (20) of the pendant control.
3. Fit the complete cylinder holder (20) together with the cover (28) on the valve housing (C) — use the same screws (D) as were used previously to hold on the casing (A).
4. Connect the hose (E) to the hole in the valve housing where the screw (B) was seated previously using the fitting provided.
5. Hang up the air hoist and connect it to the compressed air supply line.
6. Turn the control yoke (F) by hand in the lifting direction so that the adjusting screw (G) stops against the lower chain guide. Then cautiously depress the push button (37) for lifting and check that the piston rod (H) does not travel upwards any further. If necessary, screw in the adjusting screw (G) slightly and lock it with the nut (J).
7. Check if possible with the maximum working load, that the lowering speed does not exceed:
 - 85 FPM (26 m/min.) for AC 1/4 Ton
 - 69 FPM (21 m/min.) for AC 1/2 Ton
 - 36 FPM (11 m/min.) for AC 1 TonIf necessary, adjust the setting of the screw (K).
8. Fit the cover (27).

Adjusting the pressure point position of the push buttons — If necessary, the push buttons (37 and 38) can be actuated by the buffers (40) which give a clear pressure-point position. The position of the buffers is adjusted with the setting screws (41).

In adjusting, the push button is kept lightly pressed against the buffer, whereupon the screw is adjusted until the wanted speed is obtained.

Spare Parts — Contact your local Coffing® distributor or refer to manual no. AC-680-1.

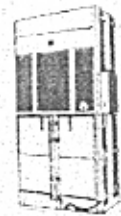
Lifting Heights — The connection hose for the pendant control is delivered as standard for a lifting height of 9.8 ft. (3 meters). For other lifting heights, the following lengths apply for:

- Wire 4190-0138, lifting height minus 2.3 ft. (0.7 m)
- Nylon tube 9030-0059, three lengths, each of the lifting height minus 2 ft. (0.61 m)
- Protection hose 4310-0844, lifting height minus 3 ft. (0.91 m)

Lubrication — The moving parts of the pendant control are lubricated with grease of EP type.

NOTE: The piston rod (H) and the cylinder bore are lubricated with molybdenum disulphide grease, e.g., Molykote BR 2.

BEATON



OVERHEAD EQUIPMENT
HOISTS

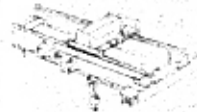
ERGONOMICS

HYDRAULIC
BALERS

AIR CURTAINS
BALERS/COMPACTORS
BELOW HOOK
BENCHES/CARTS/TOOLS
BRIDGE CRANES
CABINETS
CASTERS/WHEELS
CONTAINERS/WHEELS
CONVEYORS
DOCK EQUIPMENT
ENGINEERED SYSTEMS
FLOOR MATTING
OVERHEAD DOORS
DRUM HANDLING
FLAMMABLE CABINETS
FLOW RACK
GANTRY CRANES
GUARD RAIL
HAND TRUCKS
HIGH SPEED ROLL UP DOORS
HOISTS
INDUSTRIAL BATTERIES
INDUSTRIAL VACUUMS
INPLANT OFFICES
INSTALLATIONS
JIB CRANES
LAYOUTS/DESIGNS
LIFTERS
LIFT TABLES
LOCKERS
MACHINE MOVERS
MESSAGE TRANSFER
MEZZANINES
MODULAR DRAWER CABINETS
MOBILE AISLE STORAGE
OFFICE FURNITURE
OVERHEAD LIFTING EQUIPMENT
PALLETS
PALLET TRUCKS
PERSONNEL LIFTS
SAFETY LADDERS
SCALES
SELF DUMPING HOPPERS
SERVICE/SERVICE CONTRACTS
STACKER CRANES
STORAGE PRODUCTS
STRETCH WRAP MACHINES
SHIPPING SUPPLIES
TABLES
TOILET PARTITIONS
AND MANY MORE...



CONVEYOR



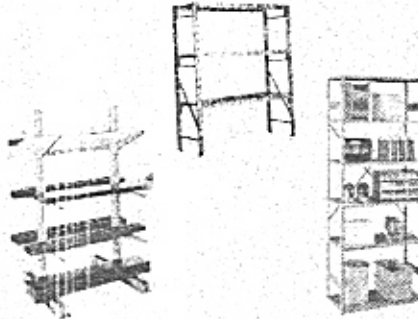
BRIDGE CRANES



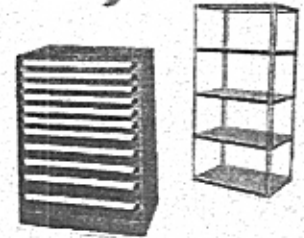
WRAPPERS



SLINGS



RACKING/SHELVES



SHOP EQUIPMENT



HAND TRUCKS

Beaton Industrial, Inc.

6083 Trenton Road
Utica, NY 13502

Ph. 1-800-724-4052 (N.Y. Only)

Ph. 1-315-797-9346

Fax 1-315-797-9321

e-mail:

beaton@deamscape.com

Web:

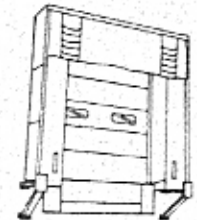
www.BeatonIndustrial.com



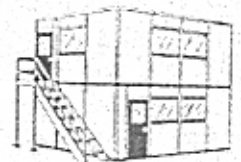
PULLERS



MEZZANINES



DOCKS, DOORS, SEALS



INPLANT OFFICES

HOIST AND CRANE REPAIR CENTER
INSTALLATIONS, PARTS, SERVICE
DESIGN/LAYOUT/ FABRICATIONS,
APPLICATION STUDIES
CRANE & HOIST INSPECTIONS

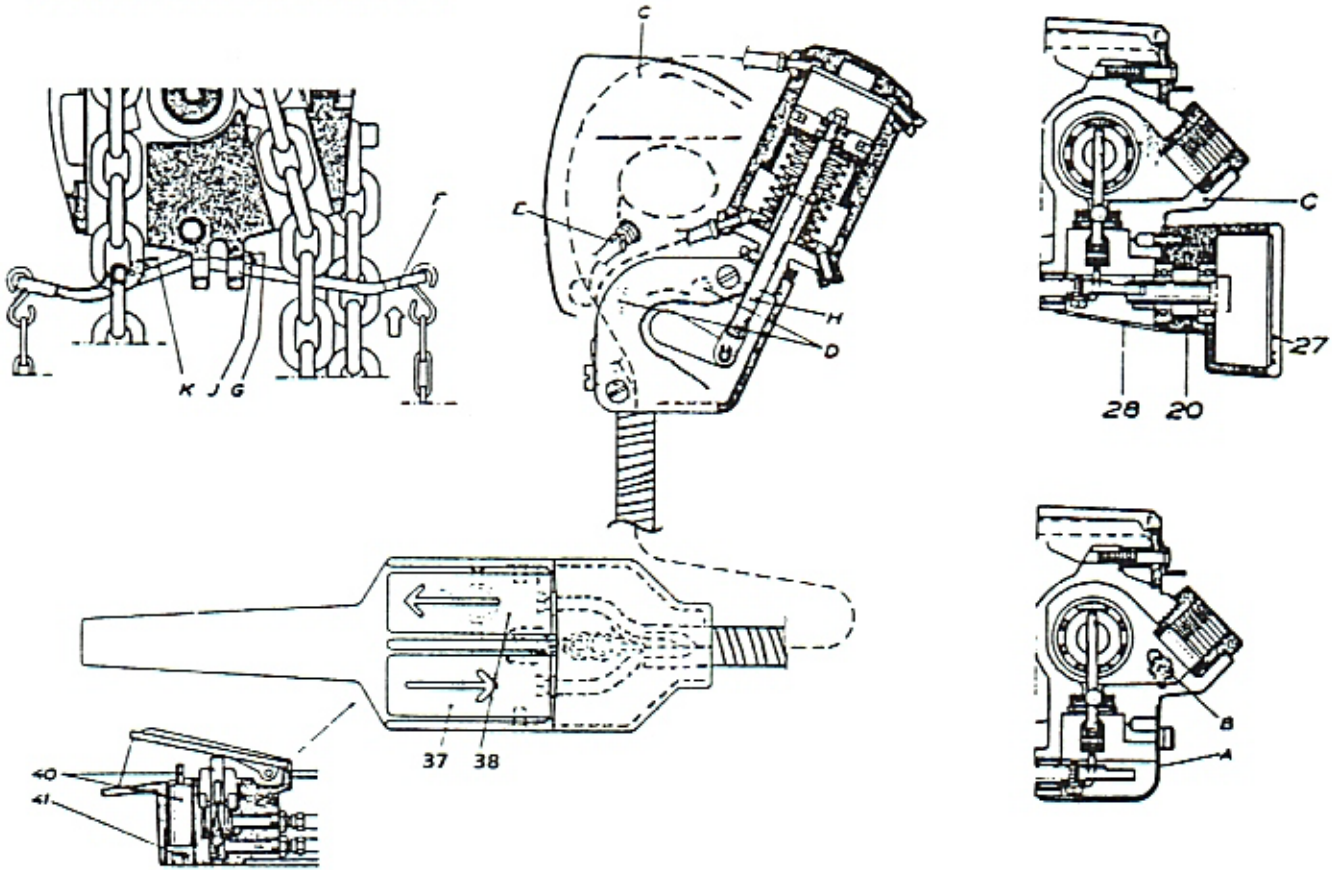


CASTERS

"Specializing In Materials Handling"

AC SERIES PENDANT CONTROL

FOR FOLLOWING ASSEMBLY NOS.
17301, 17306, 17311, 17316, 17321



P.O. Box 7010
Charlotte, NC 28241-7010

Customer Service (704) 588-2720
Parts Service (704) 588-2323
FAX (704) 588-8466

Duff-Norton Manufactures:
Duff-Norton® Actuators • Mechanical Jacks • Rotary Unions® • Coffing® Hoists
Duff Lynx® Hoists • Yale® Hoists • Shop King Hoists • Little Mule® Products • American Lifts

Printed in U.S.A.
2M 10/90